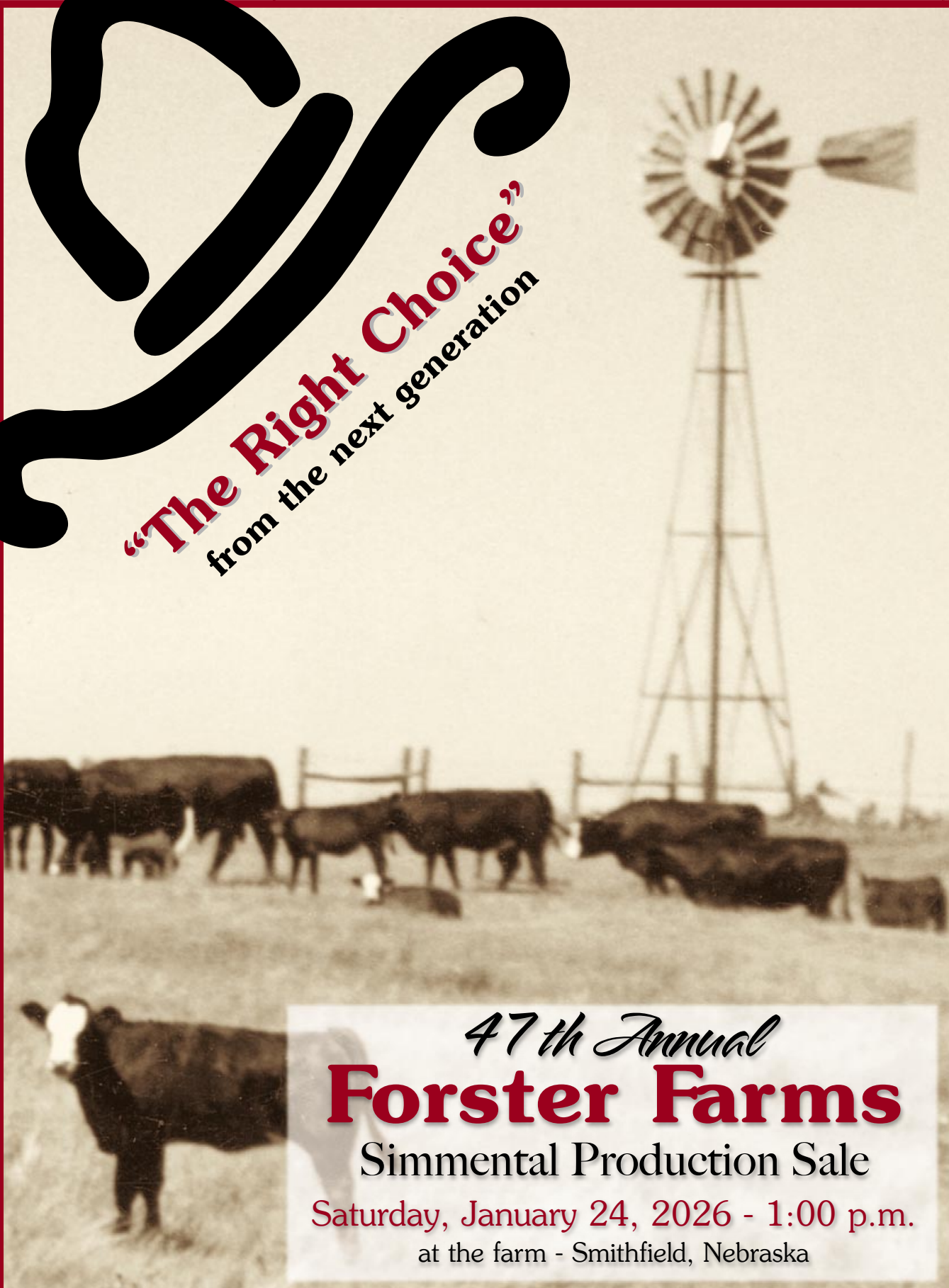




“The Right Choice”
from the next generation



47th Annual
Forster Farms

Simmental Production Sale

Saturday, January 24, 2026 - 1:00 p.m.

at the farm - Smithfield, Nebraska

FORSTER FARMS

Welcome fellow cattlemen and cattle women to our 47th annual Simmental production sale. We invite you to be our guest for a great lunch and analyze our offerings. Whether your operation needs a high growth, more terminal sire or one with calving ease and proven maternal qualities, you will find a strong selection of exceptional quality potential herd sires that can fill your herds needs. As always, our offering includes from Purebreds to 1/4 bloods of both red and black genetics. Many are sired by the most popular proven sires of the Simmental, Angus and Red Angus breeds.



Alan, Verlouis, Craig and Kevin Forster

All bulls selling are guaranteed against career ending injury, not death, for the first 60 days from turn out. Please let us know as soon as your problem occurs so we can take appropriate action. We will cover your loss by pro-rating how long you used him and the salvage value to derive a credit towards your next purchase. We always try and maintain a good selection of private treaty bulls throughout the year when you need a replacement bull. If you have questions or concerns, please give us a call. Alan 308-991-2208.

We will have our supplement sheet posted to our web-site as soon as they are available at www.ForsterFarms.com. It will include the bulls new enhance 100k EPDs and updates on Homozygous status. Please remember that EPDs are the best predictor of performance to facilitate improvement in your herd. If you have any questions about EPDs or cross breeding to fit best for your operation, I would be glad to help.

As always, the sale offering is available for your inspection ahead of the sale. It is always good to see them in their natural environment and with one-on-one interaction. Also, our cow herd and herd sires are available for viewing. If you have any questions or would like my input about the offering, please call and or stop by.

The sale will be a video only sale broadcast live on DVAuction.com. We thank you for your interest in our program and look forward to seeing you sale day!

Alan Forster The Forster Farms Family



Verlouis & Darlene



Alan Forster Family



Kim and Kevin Forster



Nigel and Shelby Forster family



Lane, Lynn,
Nash & Maysa Egle



Reid Ayres Family

Breed EPD Averages

CE	BW	WW	YW	MCE	MM	MWW	CW	REA	\$API	\$TI
Simmental Averages										
9.7	1.3	78.7	117.2	5.6	22.9	62.6	32.9	.88	129.8	80.5
SimAngus™ Averages										
11.4	0	77.3	120	6.9	23.7	62.6	37.8	.68	133.3	82

**All EPDs from the American Simmental Association*



47th Annual

Forster Farms

“Simmental Production Sale”

Saturday, January 24, 2026 - 1:00 p.m.

at the farm - Smithfield, Nebraska

(one mile east of Smithfield on Hwy. 23, then 1/2 mile north)

141 Exceptional Lots

An outstanding, stout set of performance-bred purebred and percentage bulls.

39 Bred Heifers • 18 Open Heifers • 84 Yearling Bulls

Over 80% are Black, and the balance are Solid Red or Red Baldy . . . hard to match this high-performing set of Forster-Bred Stock!!

Herd Health Program:

At Birth

Alpha 7
Multimin90
Vitamin AD

Branding

Vira Shield 6
Autogenous Pinkeye
Vision 7/Somnus

Weaning

Vista Once
Safe Guard
Clean Up

3-4 Weeks Post Weaning

Bovi Shield Gold 5
Somubac
All Heifers are Bangs Vaccinated

Bred Heifers

Pre Breeding
Pregguard 9

Preg Check

Scour Guard 3KC
Autogenous Colostridium
Clean Up

Off Grass

Ivermectin

*All announcements from the block take precedence over all written material.

*All bulls have Adjusted Birth Weights.

*ASA approved Sale Terms and Conditions will be used.

Dam's Age

To determine Dam's age. Look at the letter in her Tattoo.

For example: H - Born in '21
G - Born in '20
F - Born in '19

* All animals selling have received a rumen magnet.

* All females will be pregnancy checked prior to the sale to confirm pregnancy status, bred or open

Bull Buyers

This year every bull selling is eligible for FREE board, FREE semen check and FREE delivery to Nebraska and Kansas on or around March 1st. Forster Farms will assist in making arrangements for delivery in any other state in the continental U.S. If the buyer wishes to take delivery later than March 1st, he shall be charged \$5.00 per day per head until he picks up his bulls.

- All animals sell under the terms and conditions of the American Simmental Association -

Forster Farms Right to Collect . . . Forster Farms reserves the right to collect semen, at their expense, on any bull selling for within herd use only. We are retaining 1/3 semen interest in every bull selling.

How the bulls are fed . . . This year the bulls were started on a weaning ration then moved to Purina Impact Backgrounder that does not require hay. We fed them grass hay free choice for several weeks to move them up slower. The final weeks before the sale, after yearling data they will be transitioned to a TMR of Ground hay, silage and Wet Distillers grain.

Every bull sells with . . . a first breeding season guarantee against injury, not death for the first 60 days from turn out. We will prorate your credit minus salvage value for credit only on your next purchase.

Livestock Press Representatives:

Livestock Plus Randy Rasby 308-539-6195
Livestock Digital Chris Butler 402-380-8244

Motel Accommodations:

Super 8 - Lexington, NE 308-324-7434
Comfort Inn - Lexington, NE 308-324-3747
Super 8 - Holdrege, NE 308-995-2793

Auctioneer:

Tracy Harl
605 E County RD 72
Wellington, CO 80549
402-469-3852

Created by:

ASA PUBLICATION, INC
One Genetics Way, Bozeman, MT 59718
Phone: 406-587-2778
www.simmental.org

Join Us For A Great Complimentary Sale Day Lunch

Sale Day Phone: 308-991-2208

Forster Farms

74096 RD 434, Smithfield, Nebraska 68976
Office: 308-472-5036 • Alan: 308-991-2208

Verlouis: 308-472-3086 • Nigel: 308-991-6344 • Kevin: 308-325-2093
email: alan_forster@hotmail.com • www.ForsterFarms.com



REFERENCE SIRES

ASA Number	Name	Color - HPS - Breeds	CE	BW	VV	YW	MCE	MM	MWW	CW	MB	REA	API	TI
3938103	B A R DYNAMIC	Homo Black - Homo Polled - PB AN	23.3	-5	109.8	181.9	15	25	80.1	73.8	1.09	.43	179	112
4184365	BB PROPULSION 9096	Red - Polled - PB AR	10.6	-1	84.7	129.2	6.2	29.6	71.8	30.8	.71	.00	137	95
3834930	BIEBER CL ENERGIZE F121	Red - Homo Polled - PB AR	16.8	-4.8	65.3	112	8.2	29.5	62	15.4	.45	.11	140	83
2674433	BROWN JYJ REDEMPTION Y1334	Red - Homo Polled - PB AR	15.7	-4.8	66.4	115.5	6.7	23.4	56.5	27.5	.62	-.14	147	87
2880390	CCR BOULDER 1339A	Homo Black - Homo Polled - 1/2 SM 1/2 AN	13.2	-2.2	67.5	106.5	8.7	22.3	55.9	13.6	.57	.57	145	84
3437418	CCR COMMANDER 5135F	Homo Black - Homo Polled - 1/2 SM 1/2 AN	14.8	-0.4	76.9	120.3	11	20.3	58.4	38.1	.62	.83	170	88
3287123	CDI PERCEPTION 254E	Red - Homo Polled - PB SM	15.7	-3	67.3	109.8	6.4	26.8	60.4	35.3	.25	.36	161	81
3563436	CLRS GUARDIAN 317G	Homo Black - Homo Polled - PB SM	13.2	-2.4	98.7	149	7.1	15.8	65.1	53.7	.64	1.16	186	108
3539085	COLLIER FINISHED PRODUCT	Red - Polled - 5/8 AN 3/8 AR	17.6	-5.9	55.2	92.8	11.2	16	43.5	36.7	.41	.16	128	76
3707054	CONNEALY NATIONAL 390C	Black - Homo Polled - PB AN	23.3	-3.6	87.3	142.9	8	33	76.6	65.7	.68	1.04	153	88
4219825	DTR HUSKERLAND 370L	Homo Black - Homo Polled - 5/8 SM 3/8 AN	7.4	1.2	96.6	148.8	4.9	32.2	80.3	59.5	.57	1.00	139	96
4422935	DTR RIGHT HAND MAN 460M	Homo Black - Homo Polled - PB SM	14	-2.4	84.7	125.5	11.5	23.4	65.7	50.5	.00	1.15	125	85
3923055	DTR SOUTH FORTY 250J	Hetero Black - Homo Polled - PB SM	15.8	-0.4	72.5	107.4	9	23.4	59.6	26.5	.01	.85	132	76
3659337	E&B PLUS ONE	Homo Black - Polled - PB AN	19.6	-2.9	72.3	130.1	5.1	24	60.6	40.6	.84	.60	139	82
3964718	FELT EMMETT 831J	Homo Black - Homo Polled - 5/8 SM 3/8 AN	10.6	1.9	97.7	146.9	5.7	20.2	69.4	49.7	.54	.78	132	94
4141169	FELT EXECUTIVE ORDER 981K	Homo Black - Homo Polled - PB SM	17.4	-3	55.3	93.5	9.3	22.5	50.1	27.7	-.15	.78	127	65
4308239	FELT FRONTLINE 168L	Homo Black - Homo Polled - 3/4 SM 1/4 AN	10.9	0.1	80.5	126.8	6.6	26.6	66.9	40.3	.29	.81	132	82
3636586	FELT GETCHA SUM G113	Homo Black - Homo Polled - 5/8 SM 3/8 AN	6.2	2	100.6	160.1	4.9	13.6	63.8	51.2	.06	.72	101	83
3493800	FELT PERSEVERANCE 302F	Hetero Black - Homo Polled - PB SM	13.1	-0.8	82.4	128.4	5.9	20.9	62	39.3	-.30	1.09	117	75
3338867	FF COWBOY CUT E1316	Homo Black - Polled - 3/4 SM 1/4 AN	14.2	-0.3	74.4	109.6	8.8	32.6	69.6	23.5	.42	.35	140	82
3843915	FF COWBOY H1641	Homo Black - Polled - 5/8 SM 3/8 AN	18.8	-2.7	50.8	73.5	9.9	24.6	49.9	12.5	.23	.40	132	66
4136556	FF ENHANCE K2019	Homo Black - Polled - 1/2 SM 1/2 AN	17.3	-3.3	52.8	112.1	10.1	29.7	57.4	37	.74	.48	168	83
3504986	FF MR PD 815 F1012	Homo Black - Homo Polled - 1/2 SM 1/2 AN	18.6	-2.8	50	73	10.4	35.8	60.9	16.7	.19	.64	145	66
3922438	FF NIGHT RIDE J1723	Homo Black - Polled - 5/8 SM 3/8 AN	8.8	0.4	96.3	151.5	6	19.6	67.7	52.6	.49	1.16	144	95
3922433	FF PAY DIRT J1985	Hetero Black - Polled - 5/8 SM 3/8 AN	17.4	-1.7	76.3	119.6	10.4	27.7	65.7	45.8	.40	.69	148	84
3196792	FF STEP UP D918	Black - Polled - 3/4 SM 1/4 AN	13.3	-0.6	52.9	91.8	7.4	19.8	46.3	25	.15	.88	123	63
3549340	GW COPPERHEAD 919G	Red - Homo Polled - 1/2 SM 5/16 AR 3/16 AN	14.8	-2	85.1	137.7	8.8	24.7	67.1	29.6	.86	.76	170	102
3253742	HOOK'S EAGLE 6E	Homo Black - Homo Polled - 3/4 SM 1/4 AN	12.6	-2.4	97.5	151.1	5.2	17.1	65.8	38.9	.53	1.29	156	101
3403352	HOOK'S FRONTLINE 40F	Homo Black - Homo Polled - PB SM	12.4	-0.7	68.9	109.8	7.8	27.6	62	22.3	.65	.71	175	90
3563694	HOOK'S GRATITUDE 71G	Red - Homo Polled - PB SM	15.8	-3.6	65.7	79.9	8.7	25.6	58.4	-1.9	.39	.61	145	84
4308970	IR LODESTAR L645	Homo Black - Homo Polled - 5/8 SM 3/8 AN	15.7	-2.8	88.7	146	9.6	25.5	70.3	59.6	.81	1.29	179	104
3789539	KBHR BOLD RULER H152	Homo Black - Homo Polled - PB SM	17.3	-2.6	79.8	130.1	11.3	37.6	77.4	39.9	.94	.58	198	107
3789447	KBHR HONOR H060	Homo Black - Homo Polled - PB SM	14.7	-2.4	88.2	136.3	9.9	25.4	69.4	41.1	.48	1.05	173	100
3789458	KBHR REVOLUTION H071	Homo Black - Homo Polled - PB SM	10.4	1.5	107	164.1	4.2	22.2	75.6	68.9	.38	1.17	162	102
3603651	LBRS GENESIS G69	Homo Black - Homo Polled - PB SM	4.3	2.9	113.2	172.1	4.2	23.9	80.4	77.1	.88	1.11	177	116
3417756	SYDGEN ENHANCE	Homo Black - Homo Polled - PB AN	14.9	-2.1	78.5	157.8	8	29.6	72.3	58.4	.97	.40	159	88
3718806	TEHAMA PATRIARCH F028	Homo Black - Homo Polled - PB AN	19.4	-3.9	88.1	159.1	15	30	74.6	63.7	.82	.62	159	92
4216800	TJ AFFIRMATIVE 814L	Homo Black - Homo Polled - PB SM	12.4	-0.7	75.7	125.1	7	34.9	72.6	44.1	.66	.81	176	95
3582558	TJ ARROWHEAD 263G	Homo Black - Homo Polled - 1/2 SM 1/2 AN	17.3	-5.1	75.3	119.4	8.2	34.8	72.3	33.9	.53	.60	160	92
3611575	TJ CHIEF 460G	Homo Black - Homo Polled - 1/2 SM 1/2 AN	11.7	-0.8	79.7	113.7	5.5	29.4	69.2	31.7	.23	.30	129	79
3582577	TJ GOLD 274G	Homo Black - Homo Polled - PB SM	15.1	-3.5	76.9	115.7	9.6	16.5	54.8	16.2	.62	.69	176	96
3762359	TJ PRIME RIB 644H	Homo Black - Homo Polled - 1/2 SM 1/2 AN	22.8	-5.1	68.8	116.5	9.9	36.7	72	39.5	.82	.56	183	96
3910125	TJ WAR PAINT 759J	Homo Black - Homo Polled - 1/2 SM 1/2 AN	9.3	1.1	85.2	123.1	5.9	25.2	67.7	41.8	.40	.26	138	83
4111871	TSN BALD EAGLE K011	Homo Black - Homo Polled - PB SM	16.7	-2	107.8	163.4	8.9	24.5	78.3	46.6	.19	1.01	164	103



Dillon and Kristin Tiede



Erin Jauken family,
daughter of
Alan and Becky



Sean and Tina Jauken
family



Jon, Katie, Tucker
and Tripp Rhodig



Bridet Foster daughter of
Nigel and Shelby Forster

FORSTER FAMILY



Cousins – Tucker & Tripp Rhodig, Nash & Maysa Egle



Aubrey Champion at 2025 Gosper county fair

YEARLING BULLS



MATERNAL GRANDSIRE CCR COWBOY CUT 5048Z



FF ENHANCE 2019 N111

ASA# 4568909 • BD: 2025-03-24
Adj. BW: 75 lbs. • Adj. 205: 730 lbs.

Homo Black • Polled • 5/8 Simmental • Bull

FF ENHANCE K2019

SYDGEN ENHANCE

FF MS FRONT LINE H1619

FF MS COWBOY CUT J1613

CCR COWBOY CUT 5048Z

FF MS HOOVER DAM D103

EPDs:	CE	BW	WW	YW	MCE	MM	MW
	15	-1.5	68.5	121.2	9.7	26.8	62
	CW	MARB	REA	API	TI		
	37.9	.60	.65	158	85		



N117



FF BALD EAGLE N117

ASA# 4568895 • BD: 2025-03-06
Adj. BW: 78 lbs. • Adj. 205: 836 lbs.

Homo Black • Homo Polled • 5/8 Simmental • Bull

TSN BALD EAGLE K011

HOOK'S EAGLE 6E

TSN MISS JUDGE H414

FF PAY DIRT J1117

CCR PAY DIRT 2340C

FF MS PAYOFF Y167

EPDs:	CE	BW	WW	YW	MCE	MM	MW
	12.5	-0.2	97.6	147.1	7.8	29	77.7
	CW	MARB	REA	API	TI		
	48.5	.28	.77	143	92		



FF NIGHT RIDE 918 N122

ASA# 4568900 • BD: 2025-03-01
Adj. BW: 78 lbs. • Adj. 205: 656 lbs.

Black • Homo Polled • 1/2 Simmental • Bull

FF NIGHT RIDE K918

J BAR J NIGHTRIDE 225Z

FF MS TOTAL W158

FF MS POWERBALL J1434

RAVEN POWERBALL 53

FF MS SHOOTER B724

EPDs:	CE	BW	WW	YW	MCE	MM	MW
	13.9	-1.3	61.9	104.7	7.8	22.4	53.7
	CW	MARB	REA	API	TI		
	38.7	.60	.52	148	79		



FF GRATITUDE N125

ASA# 4568898 • BD: 2025-03-08
Adj. BW: 76 lbs. • Adj. 205: 752 lbs.

Red • Polled • 3/4 Simmental • Bull

HOOK'S GRATITUDE 71G

WS ALL ABOARD B80

HOOK'S CINNAMON 44C

FF MS BULLET PROOF J1425

RFS BULLETPROOF B42

FF MS MISSION ST B1125

EPDs:	CE	BW	WW	YW	MCE	MM	MW
	13.1	-1.4	76.9	108.4	7.5	27.1	65.5
	CW	MARB	REA	API	TI		
	20.2	.33	.82	130	83		



FF HICKOK 126B

ASA# 4568926 • BD: 2025-02-05
Adj. BW: 61 lbs. • Adj. 205: 668 lbs.

Black • Homo Polled • 3/8 Simmental • Bull

MILL BAR HICKOK 7242

CONNELLY CONSENSUS 7229

MILL BAR BEMINDFUL MAID 6304

FF MS BEACON J1916

HOOK'S BEACON 56B

FF MS JIFF G1015

EPDs:	CE	BW	WW	YW	MCE	MM	MW
	15.4	-1.4	80.5	129.1	6.5	27.2	69.4
	CW	MARB	REA	API	TI		
	46.1	.59	.75	155	89		



FF BALD EAGLE N131

ASA# 4568933 • BD: 2025-03-26
Adj. BW: 82 lbs. • Adj. 205: 862 lbs.

Black • Polled • 3/4 Simmental • Bull

TSN BALD EAGLE K011

HOOK'S EAGLE 6E

TSN MISS JUDGE H414

FF MS PAY DAY J918

CCR PAYDAY 0320C

FF MS TOTAL W158

EPDs:	CE	BW	WW	YW	MCE	MM	MW
	11	0.5	92.1	141	7.1	26.9	72.8
	CW	MARB	REA	API	TI		
	46.4	.20	.81	132	85		

YEARLING BULLS



FF BALD EAGLE N144

ASA# 4568921 • BD: 2025-02-13
Adj. BW: 83 lbs. • Adj. 205: 795 lbs.

Homo Black • Polled • 3/4 Simmental • Bull

TSN BALD EAGLE K011

HOOK'S EAGLE 6E
TSN MISS JUDGE H414

FF MS GETCHA SUM J1840

FELT GETCHA SUM G113
FF MS MASTER F1239

EPDs:	CE 10.3	BW 0.8	WW 108.3	YW 169.1	MCE 6.5	MM 24	MW 78
	CW 57.3	MARB .14	REA 1.00	API 133	TI 94		



FELT GETCHA SUM G113



FF BOLD RULER N148

ASA# 4568906 • BD: 2025-02-15
Adj. BW: 87 lbs. • Adj. 205: 762 lbs.

Homo Black • Hetero Polled • 3/4 Simmental • Bull

KBHR BOLD RULER H152

WS PROCLAMATION E202
BAR CK MS X38 106Z

FF MS GOT GAME 1140 J1548

FF GOT GAME F1140
TJ MISS 713C

EPDs:	CE 9.5	BW 1.1	WW 88.4	YW 138.1	MCE 6.8	MM 33.6	MW 77.7
	CW 46.4	MARB .58	REA .65	API 150	TI 93		



FF PROPULSION N159

ASA# 4568912 • BD: 2025-02-09
Adj. BW: 76 lbs. • Adj. 205: 718 lbs.

Red • Polled • 1/2 Simmental • Bull

BB PROPULSION 9096

PIE ONE OF A KIND 777
BB MS GINNIE 6256

FF MS PERCEPTION J1662

CDI PERCEPTION 254E
FF MS PRIME BEEF D412

EPDs:	CE 10.9	BW -0.4	WW 80.2	YW 120.9	MCE 6.1	MM 27.2	MW 67.2
	CW 32.4	MARB .41	REA .28	API 138	TI 84		



FF EXECUTIVE 981K N175

ASA# 4568922 • BD: 2025-03-30
Adj. BW: 79 lbs. • Adj. 205: 790 lbs.

Homo Black • Polled • Purebred • Bull

FELT EXECUTIVE ORDER 981K

W/C EXECUTIVE ORDER 8543B
RUBYS RHYTHM Z231

FF MS STEP UP J1885

FELT PURPLE STEPS UP
FF MS COWBOY F885

EPDs:	CE 13.9	BW -0.5	WW 69.5	YW 108.3	MCE 7.2	MM 25.3	MW 60
	CW 31.5	MARB .05	REA .92	API 135	TI 76		



FF GETCHA SUM N179

ASA# 4568919 • BD: 2025-02-15
Adj. BW: 82 lbs. • Adj. 205: 860 lbs.

Homo Black • Polled • 5/8 Simmental • Bull

FELT GETCHA SUM G113

W/C LOCK DOWN 206Z
FELT EMMY LOU E113

FF MS FRANCHISE Y1784

TJ FRANCHISE 451D
FF MS DISCOVERY E1484

EPDs:	CE 7.6	BW 2.1	WW 101.1	YW 158.9	MCE 4.5	MM 21.1	MW 71.6
	CW 49.8	MARB .26	REA .76	API 118	TI 89		



FF GENESIS N190

ASA# 4568908 • BD: 2025-02-07
Adj. BW: 84 lbs. • Adj. 205: 854 lbs.

Homo Black • Homo Polled • 3/4 Simmental • Bull

LBRS GENESIS G69

WS PROCLAMATION E202
LBR DIANA D69

FF MS GOLD RUSH J1590

EZAR GOLD RUSH 6001
RIANNA 54C

EPDs:	CE 6.5	BW 2.5	WW 106.9	YW 163.8	MCE 5.8	MM 25.1	MW 79.1
	CW 68	MARB .67	REA 1.05	API 149	TI 103		



N190

YEARLING BULLS



FF GRATITUDE N210

ASA# 4568943 • BD: 2025-03-10
Adj. BW: 75 lbs. • Adj. 205: 795 lbs.

Red • Homo Polled • 5/8 Simmental • Bull

HOOK'S GRATITUDE 71G

WS ALL ABOARD B80
HOOK'S CINNAMON 44C

FF MS FUSION K1510

ANDRAS FUSION R236
FF MS PRIME BEEF C1110

EPDs:	CE	BW	WW	YW	MCE	MM	MW
	13.3	-1.7	73.9	103.2	8.1	26.4	63.3
	CW	MARB	REA	API	TI		
	12.6	.41	.52	133	82		



FF BALD EAGLE N215

ASA# 4568966 • BD: 2025-02-28
Adj. BW: 78 lbs. • Adj. 205: 927 lbs.

Black • Homo Polled • 5/8 Simmental • Bull

TSN BALD EAGLE K011

HOOK'S EAGLE 6E
TSN MISS JUDGE H414

FF MS ENHANCE K2015

SYDGEN ENHANCE
FF BEEF 782 H1015

EPDs:	CE	BW	WW	YW	MCE	MM	MW
	14	-0.9	106.2	169.4	7.6	32.4	86
	CW	MARB	REA	API	TI		
	59.1	.40	.89	154	102		



FF NIGHT RIDE 918 N226

ASA# 4568960 • BD: 2025-03-12
Adj. BW: 74 lbs. • Adj. 205: 861 lbs.

Black • Homo Polled • 1/2 Simmental • Bull

FF NIGHT RIDE K918

J BAR J NIGHTRIDE 225Z
FF MS TOTAL W158

FF ENHANCE K1826

SYDGEN ENHANCE
FF MS RAMPAGE F1116

EPDs:	CE	BW	WW	YW	MCE	MM	MW
	14.4	-1.4	80.3	134.2	7.7	25.9	66.9
	CW	MARB	REA	API	TI		
	53	.67	.75	159	93		



FF GOLD N242

ASA# 4568968 • BD: 2025-02-07
Adj. BW: 79 lbs. • Adj. 205: 744 lbs.

Homo Black • Homo Polled • Purebred • Bull

TJ GOLD 274G

HOOK'S EAGLE 6E
TJ 12C

FF MS BIG TIMBER K2042

KOCH BIG TIMBER 685D
FF MS STEP UP H843

EPDs:	CE	BW	WW	YW	MCE	MM	MW
	12.2	-1.7	79.8	118.8	7.4	19.8	59.5
	CW	MARB	REA	API	TI		
	28.1	.44	.74	159	91		



N246



FF BALD EAGLE N246

ASA# 4568939 • BD: 2025-02-05
Adj. BW: 77 lbs. • Adj. 205: 739 lbs.

Black • Polled • Purebred • Bull

TSN BALD EAGLE K011

HOOK'S EAGLE 6E
TSN MISS JUDGE H414

FF GOLD K1445

TJ GOLD 274G
FF MS EVEREADY B944

EPDs:	CE	BW	WW	YW	MCE	MM	MW
	14.7	-1.6	92.7	139.3	7.8	22.9	69.2
	CW	MARB	REA	API	TI		
	35.6	.20	.94	156	94		



FF FLT FRONTLINE N252

ASA# 4568955 • BD: 2025-04-17
Adj. BW: 72 lbs. • Adj. 205: 869 lbs.

Homo Black • Homo Polled • 5/8 Simmental • Bull

FELT FRONTLINE 168L

FF FRONTLINE J1556
FF TEAR DROP H1686

FF MS POWERBALL K1759

RAVEN POWERBALL 53
FF MS COWBOY E411

EPDs:	CE	BW	WW	YW	MCE	MM	MW
	16.6	-1.3	84.5	132.4	9.6	24.6	67
	CW	MARB	REA	API	TI		
	49.5	.44	.75	154	90		



FF COWBOY 1641 N256

ASA# 4568940 • BD: 2025-03-26
Adj. BW: 81 lbs. • Adj. 205: 747 lbs.

Black • Hetero Polled • 1/2 Simmental • Bull

FF COWBOY H1641

TTG COWBOY CUT B750
FF MS STYLE D842

FF MS ENHANCE K1456

SYDGEN ENHANCE
FF MS IMPRESSIVE B756

EPDs:	CE	BW	WW	YW	MCE	MM	MW
	13.5	-1	64	105.6	7.8	24.1	56.6
	CW	MARB	REA	API	TI		
	24.5	.38	.38	138	75		

YEARLING BULLS



FF HUSKERLAND N261

ASA# 4568948 • BD: 2025-03-08
Adj. BW: 72 lbs. • Adj. 205: 745 lbs.

Homo Black • Polled • 5/8 Simmental • Bull

DTR HUSKERLAND 370L

TJ BLACKSHIRT 840J
DTR MS S. IMAGE 135F

FF MS COWBOY 1316 K1661

FF COWBOY CUT E1316
FF MS TOUR DUTY D401

EPDs:	CE	BW	WW	YW	MCE	MM	MW
	13.6	-0.7	83.7	126.1	8.8	30.4	72.1
	CW	MARB	REA	API	TI		
	47.4	.49	.72	147	89		



FF FLT FRONTLINE N280

ASA# 4568953 • BD: 2025-03-05
Adj. BW: 90 lbs. • Adj. 205: 764 lbs.

Black • Hetero Polled • 5/8 Simmental • Bull

FELT FRONTLINE 168L

FF FRONTLINE J1556
FF TEAR DROP H1686

FF MS PARADIGM K1750

FF PARADIGM M321
FF MS HOOVER DAM E1050

EPDs:	CE	BW	WW	YW	MCE	MM	MW
	6.9	1.8	83.9	129.6	4.8	25	66.9
	CW	MARB	REA	API	TI		
	48.7	.36	.62	128	82		



FF PAY DIRT 1985 N285

ASA# 4568958 • BD: 2025-04-05
Adj. BW: 80 lbs. • Adj. 205: 840 lbs.

Black • Polled • 5/8 Simmental • Bull

FF PAY DIRT J1985

CCR PAY DIRT 2340C
FF MS GOT GAME G885

FF MS CB CHOICE K1785

TJ COWBOY'S CHOICE 420B
FF MS STEP UP E980

EPDs:	CE	BW	WW	YW	MCE	MM	MW
	13.8	0.2	86.5	134.4	8.5	27.6	70.9
	CW	MARB	REA	API	TI		
	49.9	.35	.73	143	87		



LYNN & LANE EGLE, COREY & KEVIN AT THE NFR 2025



FF ENHANCE N321

ASA# 4568988 • BD: 2025-02-10
Adj. BW: 79 lbs. • Adj. 205: 751 lbs.

Homo Black • Polled • 1/4 Simmental • Bull

SYDGEN ENHANCE

SYDGEN EXCEED 3223
SYDGEN RITA 2618

FF MS CHIEF L1621

TJ CHIEF 460G
FF MS STYLE D163

EPDs:	CE	BW	WW	YW	MCE	MM	MW
	12.2	-0.5	79.1	137.9	7.2	29.7	71
	CW	MARB	REA	API	TI		
	47.5	.60	.41	147	87		



N321



FF COWBOY CUT N346

ASA# 4569015 • BD: 2025-02-17
Adj. BW: 90 lbs. • Adj. 205: 901 lbs.

Black • Homo Polled • 3/4 Simmental • Bull

CCR COWBOY CUT 5048Z

TRIPLE C SINGLETARY S3H
CCR MS 4045 TIME 7322T

FF MS PRIME RIB L2045

TJ PRIME RIB 644H
FF MS ABILENE H1145

EPDs:	CE	BW	WW	YW	MCE	MM	MW
	8.4	2	99.8	150	5.1	28	77.9
	CW	MARB	REA	API	TI		
	44.4	.53	.77	143	96		



N346

YEARLING BULLS



FF HICKOK N352

ASA# 4568989 • BD: 2025-02-18
Adj. BW: 81 lbs. • Adj. 205: 741 lbs.

Black • Polled • 1/2 Simmental • Bull

MILL BAR HICKOK 7242

CONNELY CONSENSUS 7229

MILL BAR BEMINDFUL MAID 6304

FF FRONT LINE L163

HOOK'S FRONTLINE 40F

FF MS COWBOY CUT J1663

EPDs:	CE 13.9	BW 0.1	WW 84.7	YW 134.3	MCE 6.6	MM 25.3	MW 68.6
	CW 40.7	MARB .58	REA .63	API 155	TI 91		



FF HICKOK N358

ASA# 4568991 • BD: 2025-03-07
Adj. BW: 75 lbs. • Adj. 205: 901 lbs.

Black • Polled • 1/4 Simmental • Bull

MILL BAR HICKOK 7242

CONNELY CONSENSUS 7229

MILL BAR BEMINDFUL MAID 6304

FF MS ABSOLUTE L168

K C F BENNETT ABSOLUTE

FF AX COWBOY J1658

EPDs:	CE 16.6	BW -1.2	WW 92	YW 147.1	MCE 7.7	MM 29.7	MW 76.4
	CW 49.6	MARB .54	REA .59	API 154	TI 95		



FF BOLD RULER N372

ASA# 4568994 • BD: 2025-02-17
Adj. BW: 83 lbs. • Adj. 205: 721 lbs.

Homo Black • Polled • 3/4 Simmental • Bull

KBHR BOLD RULER H152

WS PROCLAMATION E202

BAR CK MS X38 106Z

FF MS COMMANDER L172

CCR COMMANDER 5135F

FF MASTER J1520

EPDs:	CE 12.7	BW -0.1	WW 84.2	YW 135	MCE 9.4	MM 34.1	MW 76.1
	CW 47.4	MARB .68	REA .72	API 165	TI 95		



FF BOLD RULER N376

ASA# 4568982 • BD: 2025-02-24
Adj. BW: 75 lbs. • Adj. 205: 836 lbs.

Black • Polled • Purebred • Bull

KBHR BOLD RULER H152

WS PROCLAMATION E202

BAR CK MS X38 106Z

FF MS PD 1012 L1577

FF MR PD 815 F1012

FF MS COMBUSTABLE C607

EPDs:	CE 16.1	BW -1.1	WW 81.8	YW 127.6	MCE 9.7	MM 36	MW 76.8
	CW 42.3	MARB .48	REA .77	API 170	TI 95		



FF DYNAMIC N378

ASA# 4569009 • BD: 2025-02-16
Adj. BW: 77 lbs. • Adj. 205: 854 lbs.

Homo Black • Polled • 1/2 Simmental • Bull

B A R DYNAMIC

DEER VALLEY GROWTH FUND

B A R BLACKCAP 7235-B0048

FF MS GOLD L1978

TJ GOLD 274G

FF MS COWBOY CUT G1777

EPDs:	CE 17.1	BW -2.3	WW 105.4	YW 165.4	MCE 11.2	MM 28.7	MW 81.3
	CW 55.9	MARB .77	REA .65	API 175	TI 111		

YEARLING BULLS



FF GREAT WESTERN 1933 N379

ASA# 4569010 • BD: 2025-03-17
Adj. BW: 73 lbs. • Adj. 205: 811 lbs.

Homo Black • Polled • 5/8 Simmental • Bull

FF GREAT WESTERN K1933

EGL GREAT WESTERN 87G
FF MS ABSOLUTE G1714

FF MS GOLD L1979

TJ GOLD 274G
FF MS MAIN EVENT G1279

EPDs:	CE	BW	WW	YW	MCE	MM	MW
	14.6	-2.9	80	119.9	8.7	25.6	65.5
	CW	MARB	REA	API	TI		
	32.1	.55	.68	159	91		



FF AFFIRMATIVE N385

ASA# 4569011 • BD: 2025-02-19
Adj. BW: 83 lbs. • Adj. 205: 750 lbs.

Black • Polled • 3/4 Simmental • Bull

TJ AFFIRMATIVE 814L

KBHR BOLD RULER H152
TJ 6F

FF MS PRIME RIB L1985

TJ PRIME RIB 644H
FF MS GOT GAME G885

EPDs:	CE	BW	WW	YW	MCE	MM	MW
	13.8	-0.7	75	121.2	7.1	34.5	72
	CW	MARB	REA	API	TI		
	41.8	.58	.78	155	88		



FF GENESIS N1218

ASA# 4569021 • BD: 2025-02-07
Adj. BW: 88 lbs. • Adj. 205: 682 lbs.

Black • Polled • Purebred • Bull

LBRS GENESIS G69

WS PROCLAMATION E202
LBR DIANA D69

FF MS PROTO 508 Z048

FF PROTOTYPE SM/AN T508
FF MS FORTUNE 500 L018

EPDs:	CE	BW	WW	YW	MCE	MM	MW
	9.1	1	80.7	118	5.6	20.1	60.3
	CW	MARB	REA	API	TI		
	43.9	.55	.76	154	90		



N1218



FF BALD EAGLE N1428

ASA# 4568715 • BD: 2025-02-25
Adj. BW: 67 lbs. • Adj. 205: 704 lbs.

Black • Homo Polled • 3/4 Simmental • Bull

TSN BALD EAGLE K011

HOOK'S EAGLE 6E
TSN MISS JUDGE H414

FF MS EVEREADY B168

TNT EVER READY R232
D A R BLACKBIRD 503

EPDs:	CE	BW	WW	YW	MCE	MM	MW
	17.2	-2.3	81.3	120.7	7.7	19.4	60.3
	CW	MARB	REA	API	TI		
	33.5	.17	.77	135	82		



GRANDSIRE HOOK'S EAGLE 6E



FF HUSKERLAND N1441

ASA# 4568716 • BD: 2025-02-28
Adj. BW: 79 lbs. • Adj. 205: 743 lbs.

Homo Black • Polled • 5/8 Simmental • Bull

DTR HUSKERLAND 370L

TJ BLACKSHIRT 840J
DTR MS S. IMAGE 135F

FF BEEF MAX B308

FF BEEF MAX W594
FF MS PARADIGM SM/AN S29

EPDs:	CE	BW	WW	YW	MCE	MM	MW
	9.4	1.3	86	131.4	6.1	22.6	65.4
	CW	MARB	REA	API	TI		
	52.4	.40	.77	134	85		



N1441

YEARLING BULLS



N1451



FF BALD EAGLE N1451

ASA# 4568707 • BD: 2025-03-06
Adj. BW: 75 lbs. • Adj. 205: 776 lbs.

Homo Black • Polled • 3/4 Simmental • Bull

TSN BALD EAGLE K011

HOOK'S EAGLE 6E
TSN MISS JUDGE H414

VOLK COW 211B

MR NLC UPGRADE U8676
2026

EPDs:	CE	BW	WW	YW	MCE	MM	MW
	14.2	-0.8	92.1	138.2	7.8	25.5	71.5
	CW	MARB	REA	API	TI		
	42.3	.27	.89	132	89		



N1480



FF GETCHA SUM N1480

ASA# 4568720 • BD: 2025-02-12
Adj. BW: 109 lbs. • Adj. 205: 880 lbs.

Homo Black • Polled • 5/8 Simmental • Bull

FELT GETCHA SUM G113

W/C LOCK DOWN 206Z
FELT EMMY LOU E113

FF MS PAY DAY B780

FF PAY DAY Y110
FF MS FIGURE THIS T500

EPDs:	CE	BW	WW	YW	MCE	MM	MW
	-0.6	5.8	106.3	162.2	0.1	24	77
	CW	MARB	REA	API	TI		
	48.7	.05	.76	99	81		



N1510



FF COPPERHEAD N1510

ASA# 4568727 • BD: 2025-02-13
Adj. BW: 83 lbs. • Adj. 205: 691 lbs.

Red • Polled • 5/8 Simmental • Bull

GW COPPERHEAD 919G

GW MOVIN ON 183C
GW MISS DIRCT DRIVE 932E

FF MS PRIME BEEF C1110

WS PRIME BEEF Z8
FF MS SAM Y130

EPDs:	CE	BW	WW	YW	MCE	MM	MW
	9.9	0.5	82	129.1	6.7	24.2	65.1
	CW	MARB	REA	API	TI		
	28.1	.56	.76	144	89		



N1514



FF NIGHT RIDE 918 N1514

ASA# 4568731 • BD: 2025-03-10
Adj. BW: 85 lbs. • Adj. 205: 788 lbs.

Black • Polled • 5/8 Simmental • Bull

FF NIGHT RIDE K918

J BAR J NIGHTRIDE 225Z
FF MS TOTAL W158

FF MS HIGH REGARD

YARDLEY HIGH REGARD W242
FF MS INTEGRITY T074

EPDs:	CE	BW	WW	YW	MCE	MM	MW
	8.2	0.4	65.6	101.3	4	27.9	60.4
	CW	MARB	REA	API	TI		
	30.3	.42	.69	127	75		

YEARLING BULLS



FF BALD EAGLE N1579

ASA# 4568733 • BD: 2025-02-27
Adj. BW: 77 lbs. • Adj. 205: 731 lbs.

Homo Black • Polled • 3/4 Simmental • Bull

TSN BALD EAGLE K011

HOOK'S EAGLE 6E
TSN MISS JUDGE H414

FF MS FINAL ANSWER C779

S A V FINAL ANSWER 0035
FF MS DURA T539

EPDs:	CE	BW	WW	YW	MCE	MM	MW
	15.3	-1.6	90.7	138.4	9.1	26.9	72.2
	CW	MARB	REA	API	TI		
	43.6	.20	.70	142	87		



TSN BALD EAGLE K011



FF EAGLE N1613

ASA# 4568739 • BD: 2025-02-04
Adj. BW: 85 lbs. • Adj. 205: 666 lbs.

Homo Black • Polled • 1/2 Simmental • Bull

HOOK'S EAGLE 6E

HOOK'S BLACK HAWK 50B
HOOK'S CRYSTAL 1C

FF MS HOOVER DAM D103

HOOVER DAM
FF MS LEAD ON SM/AN S091

EPDs:	CE	BW	WW	YW	MCE	MM	MW
	10.1	-0.9	82.2	134.4	5.2	23.4	64.8
	CW	MARB	REA	API	TI		
	38.6	.53	1.06	147	90		



N1613



FF BALD EAGLE N1684

ASA# 4568748 • BD: 2025-02-11
Adj. BW: 79 lbs. • Adj. 205: 746 lbs.

Homo Black • Polled • 3/4 Simmental • Bull

TSN BALD EAGLE K011

HOOK'S EAGLE 6E
TSN MISS JUDGE H414

FF MS HOOVER DAM D1484

HOOVER DAM
FF MS EVEREADY B784

EPDs:	CE	BW	WW	YW	MCE	MM	MW
	15	-1.7	85.6	129.3	8	28.6	71.6
	CW	MARB	REA	API	TI		
	39.8	.23	.86	142	86		



N1684



FF KLONDIKE N1689

ASA# 4568755 • BD: 2025-02-12
Adj. BW: 85 lbs. • Adj. 205: 835 lbs.

Homo Black • Homo Polled • 5/8 Simmental • Bull

TJ KLONDIKE 549K

SQUARE B TRUE NORTH 8052
TJ 46H

FF MS AFTER SHOCK D631B

CLRS AFTER SHOCK 604 A
FF MS FREEDOM SM/AN R621

EPDs:	CE	BW	WW	YW	MCE	MM	MW
	8.8	1.7	97.6	149.7	5.2	30.3	78.8
	CW	MARB	REA	API	TI		
	52.5	.35	.72	133	91		



N1689

YEARLING BULLS



FF CHIEF N1714

ASA# 4568778 • BD: 2025-02-12
Adj. BW: 91 lbs. • Adj. 205: 716 lbs.

Black • Polled • 5/8 Simmental • Bull

TJ CHIEF 460G

TJ FROSTY 318E

TJ 52A

FF MS SANTA FE E1514

CCR SANTA FE 9349Z

FF MS HIGH REGARD

EPDs:	CE	BW	WW	YW	MCE	MM	MW
	6.1	1.5	77	110.5	3.6	27.4	65.8
	CW	MARB	REA	API	TI		
	28.3	.19	.44	112	73		



FF NIGHT RIDE 918 N1715

ASA# 4568759 • BD: 2025-03-21
Adj. BW: 81 lbs. • Adj. 205: 753 lbs.

Black • Polled • 5/8 Simmental • Bull

FF NIGHT RIDE K918

J BAR J NIGHTRIDE 225Z

FF MS TOTAL W158

FF MS BEEF 782 E1015

FF BEEF Z782

FF MS PAYOFF X075

EPDs:	CE	BW	WW	YW	MCE	MM	MW
	11.9	-0.9	60.8	93.4	5.7	25.3	55.6
	CW	MARB	REA	API	TI		
	32.2	.41	.55	132	74		



FF COWBOY CUT N1716

ASA# 4568788 • BD: 2025-02-10
Adj. BW: 73 lbs. • Adj. 205: 660 lbs.

Black • Polled • 3/4 Simmental • Bull

CCR COWBOY CUT 5048Z

TRIPLE C SINGLETARY S3H

CCR MS 4045 TIME 7322T

FF MS PAY DAY E815

FF PAY DAY Y110

FF MS HOF U086

EPDs:	CE	BW	WW	YW	MCE	MM	MW
	13.9	0.1	73.6	105.9	8.6	24.9	61.7
	CW	MARB	REA	API	TI		
	31.2	.27	.57	136	76		



FF KLONDIKE N1750

ASA# 4568762 • BD: 2025-02-09
Adj. BW: 79 lbs. • Adj. 205: 805 lbs.

Black • Polled • 3/8 Simmental • Bull

TJ KLONDIKE 549K

SQUARE B TRUE NORTH 8052

TJ 46H

FF MS HOOVER DAM E1050

HOOVER DAM

LHT MS MACHO 28X

EPDs:	CE	BW	WW	YW	MCE	MM	MW
	12.3	-0.6	85.2	131.2	7.5	33.4	75.9
	CW	MARB	REA	API	TI		
	47.5	.59	.54	146	90		



FF ENERGIZE N1754

ASA# 4568770 • BD: 2025-02-16
Adj. BW: 76 lbs. • Adj. 205: 708 lbs.

Red • Polled • 3/8 Simmental • Bull

BIEBER CL ENERGIZE F121

BIEBER CL ATOMIC C218

BIEBER CL ADELLE 575D

FF MS PRIME BEEF E1354

WS PRIME BEEF Z8

FF MS SAM A954

EPDs:	CE	BW	WW	YW	MCE	MM	MW
	14	-2.3	72.6	115.2	7	24.8	61
	CW	MARB	REA	API	TI		
	22.4	.34	.39	133	79		

YEARLING BULLS



FF CHIEF N1760

ASA# 4568775 • BD: 2025-02-13
Adj. BW: 89 lbs. • Adj. 205: 739 lbs.

Homo Black • Polled • 5/8 Simmental • Bull

TJ CHIEF 460G

TJ FROSTY 318E
TJ 52A

FF SANTA FE E1460

CCR SANTA FE 9349Z
FF MS SHOOTER B951

EPDs:	CE	BW	WW	YW	MCE	MM	MW
	7.3	1.6	83.2	122.4	4.8	25.8	67.2
	CW	MARB	REA	API	TI		
	35.1	.18	.39	118	77		



N1760



FF EMMETT N1778

ASA# 4568763 • BD: 2025-03-05
Adj. BW: 79 lbs. • Adj. 205: 729 lbs.

Homo Black • Polled • 5/8 Simmental • Bull

FELT EMMETT 831J

SCHOOLEY EMMETT C543
FELT STAR GAZING 911D

FF MS COWBOY CUT E1078

CCR COWBOY CUT 5048Z
FF MS FINAL ANSWER X578

EPDs:	CE	BW	WW	YW	MCE	MM	MW
	12.8	0.4	89.2	131.6	7.8	22.4	67
	CW	MARB	REA	API	TI		
	39.6	.41	.65	137	88		



FF FLT FRONTLINE N1780

ASA# 4568772 • BD: 2025-03-31
Adj. BW: 77 lbs. • Adj. 205: 745 lbs.

Homo Black • Homo Polled • Purebred • Bull

FELT FRONTLINE 168L

FF FRONTLINE J1556
FF TEAR DROP H1686

FF MS CB X 339 E1380

CCR COWBOY CUT 5048Z
FF MS FIGURE THIS S328

EPDs:	CE	BW	WW	YW	MCE	MM	MW
	13.1	0.1	78.5	121	7.8	27.9	67.1
	CW	MARB	REA	API	TI		
	36.8	.29	.76	152	86		



FF NIGHT RIDE 918 N1815

ASA# 4568814 • BD: 2025-02-25
Adj. BW: 85 lbs. • Adj. 205: 784 lbs.

Black • Polled • 5/8 Simmental • Bull

FF NIGHT RIDE K918

J BAR J NIGHTRIDE 225Z
FF MS TOTAL W158

FF MS STEP UP F815

FELT PURPLE STEPS UP
FF MS HOF U086

EPDs:	CE	BW	WW	YW	MCE	MM	MW
	9.1	0.9	70.3	108.4	4.5	21.5	56.6
	CW	MARB	REA	API	TI		
	33.6	.33	.90	127	75		



FF CHIEF N1818

ASA# 4568817 • BD: 2025-02-04
Adj. BW: 101 lbs. • Adj. 205: 794 lbs.

Homo Black • Polled • 5/8 Simmental • Bull

TJ CHIEF 460G

TJ FROSTY 318E
TJ 52A

FF MS COWBOY F918

CCR COWBOY CUT 5048Z
FF MS TOTAL W158

EPDs:	CE	BW	WW	YW	MCE	MM	MW
	3.4	3.6	93.9	138.1	3	27	73.8
	CW	MARB	REA	API	TI		
	41.2	.28	.59	122	83		



FF FLT FRONTLINE N1820

ASA# 4568804 • BD: 2025-03-13
Adj. BW: 74 lbs. • Adj. 205: 791 lbs.

Homo Black • Polled • 5/8 Simmental • Bull

FELT FRONTLINE 168L

FF FRONTLINE J1556
FF TEAR DROP H1686

FF MS COWBOY 1210 F1429

FF COWBOY CUT D1210
FF MS UPSHOT B095

EPDs:	CE	BW	WW	YW	MCE	MM	MW
	13.5	-0.5	79.2	121.7	8.7	29.5	69.2
	CW	MARB	REA	API	TI		
	34.6	.37	.74	143	84		



FF FLT EXECUTIVE N1841

ASA# 4568786 • BD: 2025-03-23
Adj. BW: 79 lbs. • Adj. 205: 773 lbs.

Homo Black • Homo Polled • Purebred • Bull

FELT EXECUTIVE ORDER 981K

W/C EXECUTIVE ORDER 8543B
RUBYS RHYTHM Z231

TTG COWBOY CUT E750F

CCR COWBOY CUT 5048Z
FF MS DURAMAX W750

EPDs:	CE	BW	WW	YW	MCE	MM	MW
	13.9	-0.9	67.2	103.2	6.6	26.5	60
	CW	MARB	REA	API	TI		
	30.4	.03	.68	133	74		

YEARLING BULLS



N1860



FF COPPERHEAD N1860

ASA# 4568801 • BD: 2025-02-09
Adj. BW: 84 lbs. • Adj. 205: 796 lbs.

Red • Polled • 3/8 Simmental • Bull

GW COPPERHEAD 919G

GW MOVIN ON 183C
GW MISS DIRCT DRIVE 932E

FF MS PREMIER F1360

BROWN PREMIER X7876
FF MISS. STATE A1060

EPDs:	CE	BW	WW	YW	MCE	MM	MW
	9.2	-0.1	89.1	142.3	5.5	26.5	71
	CW	MARB	REA	API	TI		
	38	.68	.73	150	95		



FAMILY WITH DANIELLE AT HER MISS RODEO NEBRASKA SEND OFF EVENT



FF NIGHT RIDE 918 N1862

ASA# 4568797 • BD: 2025-02-28
Adj. BW: 81 lbs. • Adj. 205: 763 lbs.

Black • Polled • 1/2 Simmental • Bull

FF NIGHT RIDE K918

J BAR J NIGHTRIDE 225Z
FF MS TOTAL W158

FF MS GRAD714 F1156

FF GRADUATE D714
FF MS INFOCUS Y956

EPDs:	CE	BW	WW	YW	MCE	MM	MW
	10.7	-0.5	63.7	102.2	6.3	26.6	58.3
	CW	MARB	REA	API	TI		
	29.3	.44	.65	134	76		



N1875



FF BOLD RULER N1875

ASA# 4568800 • BD: 2025-02-11
Adj. BW: 89 lbs. • Adj. 205: 760 lbs.

Homo Black • Polled • 3/4 Simmental • Bull

KBHR BOLD RULER H152

WS PROCLAMATION E202
BAR CK MS X38 106Z

FF MS GRAD 714 F1285

FF GRADUATE D714
FF MS SHARPER IMAGE Z885

EPDs:	CE	BW	WW	YW	MCE	MM	MW
	11.3	0	78.6	124.7	7.6	39.5	78.5
	CW	MARB	REA	API	TI		
	39.5	.61	.56	153	89		



GRANDPA KEVIN & NASH FEEDING COWS



FF BOLD RULER N1879

ASA# 4568802 • BD: 2025-02-20
Adj. BW: 83 lbs. • Adj. 205: 763 lbs.

Homo Black • Polled • Purebred • Bull

KBHR BOLD RULER H152

WS PROCLAMATION E202
BAR CK MS X38 106Z

FF MS STEP UP F1379

FELT PURPLE STEPS UP
FF MS PAY DAY A779

EPDs:	CE	BW	WW	YW	MCE	MM	MW
	11.6	0.5	84.5	132.3	7.1	29.5	71.6
	CW	MARB	REA	API	TI		
	42.9	.51	.76	164	94		

YEARLING BULLS



FF AFFIRMATIVE N1880

ASA# 4568815 • BD: 2025-03-20
Adj. BW: 79 lbs. • Adj. 205: 775 lbs.

Homo Black • Polled • Purebred • Bull

TJ AFFIRMATIVE 814L

KBHR BOLD RULER H152
TJ 6F

FF SANTA FE F880

CCR SANTA FE 9349Z
FF MS FIGURE FOUR U604

EPDs:	CE	BW	WW	YW	MCE	MM	MW
	11.4	0.2	80.7	128.8	7.3	30.4	70.7
	CW	MARB	REA	API	TI		
	41.6	.28	.83	151	87		



N1880



FF GOLD N1888

ASA# 4568810 • BD: 2025-02-07
Adj. BW: 79 lbs. • Adj. 205: 786 lbs.

Homo Black • Polled • 3/4 Simmental • Bull

TJ GOLD 274G

HOOK'S EAGLE 6E
TJ 12C

FF BEEF 782 F1588

FF BEEF Z782
FF MS TURN POINT C629

EPDs:	CE	BW	WW	YW	MCE	MM	MW
	12.2	-0.9	83.5	131	7.8	24.1	65.8
	CW	MARB	REA	API	TI		
	35	.45	.80	143	89		



N1888



FF HUSKERLAND N1901

ASA# 4568820 • BD: 2025-03-20
Adj. BW: 83 lbs. • Adj. 205: 807 lbs.

Black • Polled • 5/8 Simmental • Bull

DTR HUSKERLAND 370L

TJ BLACKSHIRT 840J
DTR MS S. IMAGE 135F

FF MS COWGIRL G1001

CCR COWBOY CUT 5048Z
FF MS PAYOFF X008

EPDs:	CE	BW	WW	YW	MCE	MM	MW
	7.2	2.2	94.3	140.5	5.2	28	75.1
	CW	MARB	REA	API	TI		
	50.4	.46	.79	137	90		



FF DYNAMIC N1915

ASA# 4568847 • BD: 2025-02-02
Adj. BW: 67 lbs. • Adj. 205: 682 lbs.

Homo Black • Polled • 3/8 Simmental • Bull

B A R DYNAMIC

DEER VALLEY GROWTH FUND
B A R BLACKCAP 7235-B0048

FF MS STEP UP G815

FELT PURPLE STEPS UP
FF MS HOF U086

EPDs:	CE	BW	WW	YW	MCE	MM	MW
	19.6	-2.9	82.3	132.4	11.3	26.9	67.9
	CW	MARB	REA	API	TI		
	46.2	.56	.67	157	92		



FF ENHANCE N1917

ASA# 4568822 • BD: 2025-02-04
Adj. BW: 83 lbs. • Adj. 205: 675 lbs.

Black • Polled • 1/4 Simmental • Bull

SYDGEN ENHANCE

SYDGEN EXCEED 3223
SYDGEN RITA 2618

FF MS IRON HIDE G1017

ACW IRONHIDE 395Y
FF MS PAYOFF X057

EPDs:	CE	BW	WW	YW	MCE	MM	MW
	8.4	0.5	76.9	134.8	4.5	25	64.7
	CW	MARB	REA	API	TI		
	49.8	.58	.46	137	83		



GREAT GRANDMA DARLENE TAKING NASH FOR A SPIN ON THE GOLF CART

YEARLING BULLS



N1918



FF DYNAMIC N1918

ASA# 4568832 • BD: 2025-02-10
Adj. BW: 79 lbs. • Adj. 205: 773 lbs.

Homo Black • Polled • 3/8 Simmental • Bull

B A R DYNAMIC

DEER VALLEY GROWTH FUND

B A R BLACKCAP 7235-B0048

FF PAY DAY C815

FF MS PAY DAY 815 G158

FF MS DICE L19P S158

EPDs:	CE	BW	WW	YW	MCE	MM	MW
	16.5	-1.6	87.9	141.6	10.2	33.6	77.8
	CW	MARB	REA	API	TI		
	51.4	.53	.59	154	93		



FF GOLD N1924

ASA# 4568848 • BD: 2025-02-06
Adj. BW: 73 lbs. • Adj. 205: 624 lbs.

Black • Polled • 3/4 Simmental • Bull

TJ GOLD 274G

HOOK'S EAGLE 6E

TJ 12C

FF MS ROCK G824

GIBBS 4091B THE ROCK

FF MS CANYON U133

EPDs:	CE	BW	WW	YW	MCE	MM	MW
	15.8	-3.4	63.8	96	8.2	21.1	52.9
	CW	MARB	REA	API	TI		
	16.1	.48	.64	148	81		



FF GOLD N1934

ASA# 4568827 • BD: 2025-02-04
Adj. BW: 77 lbs. • Adj. 205: 635 lbs.

Homo Black • Polled • 3/4 Simmental • Bull

TJ GOLD 274G

HOOK'S EAGLE 6E

TJ 12C

FF MS UNITED G1434

W/C UNITED 956Y

FF MS SHOOTER B724

EPDs:	CE	BW	WW	YW	MCE	MM	MW
	12.6	-1.3	74.5	118.7	8.8	19.8	57
	CW	MARB	REA	API	TI		
	29.1	.42	.51	140	82		



FF BOLD RULER N1936

ASA# 4568835 • BD: 2025-02-21
Adj. BW: 79 lbs. • Adj. 205: 855 lbs.

Homo Black • Polled • 3/4 Simmental • Bull

KBHR BOLD RULER H152

WS PROCLAMATION E202

BAR CK MS X38 106Z

FF MS THE ROCK G1616

GIBBS 4091B THE ROCK

FF MS GRADUATE D1316

EPDs:	CE	BW	WW	YW	MCE	MM	MW
	13.7	-1.3	90.3	144.3	8.8	36.1	81.1
	CW	MARB	REA	API	TI		
	47.6	.58	.84	162	98		



FF BALD EAGLE N1940

ASA# 4568828 • BD: 2025-02-25
Adj. BW: 73 lbs. • Adj. 205: 786 lbs.

Homo Black • Homo Polled • 3/4 Simmental • Bull

TSN BALD EAGLE K011

HOOK'S EAGLE 6E

TSN MISS JUDGE H414

FF MS UNITED G1440

W/C UNITED 956Y

FF MS FINAL ANSWER B339

EPDs:	CE	BW	WW	YW	MCE	MM	MW
	15.8	-1.8	99.1	151	8.9	24.2	73.7
	CW	MARB	REA	API	TI		
	49.5	.25	.75	146	94		



FF NIGHT RIDE 918 N1942

ASA# 4568852 • BD: 2025-02-17
Adj. BW: 73 lbs. • Adj. 205: 750 lbs.

Black • Polled • 5/8 Simmental • Bull

FF NIGHT RIDE K918

J BAR J NIGHTRIDE 225Z

FF MS TOTAL W158

FF G943

FF COWBOY CUT E1316

FF MS STAR POWER W343

EPDs:	CE	BW	WW	YW	MCE	MM	MW
	13.6	-1.1	67	103.1	7.5	28.2	61.5
	CW	MARB	REA	API	TI		
	31.5	.45	.58	137	79		



FF GETCHA SUM N1944

ASA# 4568837 • BD: 2025-02-07
Adj. BW: 101 lbs. • Adj. 205: 721 lbs.

Black • Polled • 5/8 Simmental • Bull

FELT GETCHA SUM G113

W/C LOCK DOWN 206Z

FELT EMMY LOU E113

FF MS SHARP 1079 G1644B

FF SHOOTER C1079

FF MS STYLE D944

EPDs:	CE	BW	WW	YW	MCE	MM	MW
	0.6	5	93.3	147.8	0.5	17.9	64.5
	CW	MARB	REA	API	TI		
	44.5	.09	.58	97	75		

YEARLING BULLS



FF COWBOY 1641 N1964

ASA# 4568838 • BD: 2025-04-02
Adj. BW: 74 lbs. • Adj. 205: 742 lbs.

Black • Polled • 1/2 Simmental • Bull

FF COWBOY H1641

TTG COWBOY CUT B750

FF MS STYLE D842

FF MS IMPRESSIVE G1660

ASR IMPRESSIVE Y162

FF MS PRIME BEEF D1360

EPDs:	CE	BW	WW	YW	MCE	MM	MW
	16.5	-2.4	61.1	90.3	8.3	27.7	58.1
	CW	MARB	REA	API	TI		
	14.4	.22	.50	130	72		



SIRE SYDGEN ENHANCE



FF GENESIS N1978

ASA# 4568844 • BD: 2025-02-07
Adj. BW: 85 lbs. • Adj. 205: 869 lbs.

Homo Black • Polled • Purebred • Bull

LBR GENESIS G69

WS PROCLAMATION E202

LBR DIANA D69

FF MS COWBOY CUT G1777

CCR COWBOY CUT 5048Z

FF MS AFTER SHOCK E777

EPDs:	CE	BW	WW	YW	MCE	MM	MW
	6.7	2.6	107.2	158.9	5.2	28.6	82
	CW	MARB	REA	API	TI		
	60.6	.56	1.02	160	105		



N1978



FF GENESIS N1982

ASA# 4568824 • BD: 2025-03-03
Adj. BW: 83 lbs. • Adj. 205: 741 lbs.

Homo Black • Polled • 3/4 Simmental • Bull

LBR GENESIS G69

WS PROCLAMATION E202

LBR DIANA D69

FF G1282

CCR COWBOY CUT 5048Z

FF MS FINAL PROD Z1081

EPDs:	CE	BW	WW	YW	MCE	MM	MW
	5.4	2.8	99.1	150.5	4.9	23	72.6
	CW	MARB	REA	API	TI		
	55.8	.58	.84	145	95		



M1918



FF HUSKERLAND N2006

ASA# 4568709 • BD: 2025-03-05
Adj. BW: 86 lbs. • Adj. 205: 708 lbs.

Black • Polled • 3/4 Simmental • Bull

DTR HUSKERLAND 370L

TJ BLACKSHIRT 840J

DTR MS S. IMAGE 135F

FELT SMOKEY 704H

HILB/JASS TOP IT OFF

BADJ ELLIE

EPDs:	CE	BW	WW	YW	MCE	MM	MW
	6.7	2.3	92.4	138.2	4.5	26.1	72.2
	CW	MARB	REA	API	TI		
	49.5	.32	.99	121	86		



FF BALD EAGLE N2011

ASA# 4568890 • BD: 2025-02-22
Adj. BW: 80 lbs. • Adj. 205: 763 lbs.

Black • Polled • Purebred • Bull

TSN BALD EAGLE K011

HOOK'S EAGLE 6E

TSN MISS JUDGE H414

FF MS STEP UP H725

FELT PURPLE STEPS UP

FF MS FUSION T135

EPDs:	CE	BW	WW	YW	MCE	MM	MW
	12.9	-0.1	88.1	131	6.7	25.7	69.6
	CW	MARB	REA	API	TI		
	32.6	.11	.99	144	87		

YEARLING BULLS



FF FLT FRONTLINE N2014

ASA# 4568869 • BD: 2025-03-25
Adj. BW: 81 lbs. • Adj. 205: 737 lbs.

Black • Polled • 5/8 Simmental • Bull

FELT FRONTLINE 168L

FF FRONTLINE J1556
FF TEAR DROP H1686

FF MS UNITED H1688

W/C UNITED 956Y
FF MS HIGH REGARD

CE	BW	WW	YW	MCE	MM	MW
9.1	0.7	78.8	123.2	5.9	29.1	68.3

CW	MARB	REA	API	TI
38.2	.26	.67	123	79



FF BALD EAGLE N2016

ASA# 4568874 • BD: 2025-03-13
Adj. BW: 71 lbs. • Adj. 205: 775 lbs.

Homo Black • Polled • 3/4 Simmental • Bull

TSN BALD EAGLE K011

HOOK'S EAGLE 6E
TSN MISS JUDGE H414

FF MS TEAR DROP H1616

TJ TEARDROP 783F
FF MS GRADUATE D1316

CE	BW	WW	YW	MCE	MM	MW
17.1	-2.5	91.6	139.6	8.2	29.5	75.2

CW	MARB	REA	API	TI
38.1	.09	.84	139	88



N2017



FF GOLD N2017

ASA# 4568878 • BD: 2025-02-10
Adj. BW: 88 lbs. • Adj. 205: 794 lbs.

Black • Polled • 3/4 Simmental • Bull

TJ GOLD 274G

HOOK'S EAGLE 6E
TJ 12C

FF MS GRADUATE 714 H1716

FF GRADUATE D714
FF MS PAY DAY E815

CE	BW	WW	YW	MCE	MM	MW
11.2	-0.8	76.5	115	7	24.6	62.7

CW	MARB	REA	API	TI
25.7	.40	.67	141	82



N2041B



FF FLT FRONTLINE N2041B

ASA# 4568882 • BD: 2025-03-15
Adj. BW: 64 lbs. • Adj. 205: 765 lbs.

Homo Black • Polled • 5/8 Simmental • Bull

FELT FRONTLINE 168L

FF FRONTLINE J1556
FF TEAR DROP H1686

FF COWBOY 1316 H1740

FF COWBOY CUT E1316
FF MS TOUR OF DUTY E1340

CE	BW	WW	YW	MCE	MM	MW
9.3	1.3	85.3	133.7	6.3	32.5	75

CW	MARB	REA	API	TI
45.2	.37	.66	134	85



FF BALD EAGLE N2045

ASA# 4568855 • BD: 2025-02-21
Adj. BW: 79 lbs. • Adj. 205: 646 lbs.

Black • Homo Polled • 3/4 Simmental • Bull

TSN BALD EAGLE K011

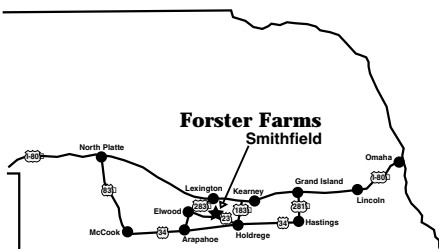
HOOK'S EAGLE 6E
TSN MISS JUDGE H414

FF MS ABILENE H1145

CCR ABILENE 6018C
FF MS LUCKY MAN Y285

CE	BW	WW	YW	MCE	MM	MW
13.4	-0.6	87.4	136.7	7.4	22.2	65.9

CW	MARB	REA	API	TI
40	.39	.75	140	89



We are located 1 mile east of Smithfield on Highway 23, then 1/2 mile North.

WWW.FORSTERFARMS.COM

YEARLING BULLS



FF GENESIS N2050

ASA# 4568868 • BD: 2025-02-11
Adj. BW: 83 lbs. • Adj. 205: 773 lbs.

Black • Polled • 5/8 Simmental • Bull

LBR5 GENESIS G69

WS PROCLAMATION E202
LBR DIANA D69

FF GOLD RUSH H1451

EZAR GOLD RUSH 6001
VOLK COW 211B

EPDs:	CE 7.8	BW 1.7	WW 100.7	YW 155.7	MCE 6.6	MM 25.7	MW 75.8
	CW 65.2	MARB .77	REA .88	API 153	TI 103		



FF COPPERHEAD N2065

ASA# 4568865 • BD: 2025-02-09
Adj. BW: 75 lbs. • Adj. 205: 656 lbs.

Red • Polled • 5/8 Simmental • Bull

GW COPPERHEAD 919G

GW MOVIN ON 183C
GW MISS DIRCT DRIVE 932E

FF BULLET PROOF H1354

RFS BULLETPROOF B42
FF MS SAM A954

EPDs:	CE 12.1	BW -0.6	WW 78.5	YW 124.7	MCE 6.7	MM 27	MW 66.1
	CW 28.8	MARB .47	REA .64	API 139	TI 86		



FF GOLD N2067

ASA# 4568883 • BD: 2025-02-01
Adj. BW: 75 lbs. • Adj. 205: 688 lbs.

Black • Polled • 3/4 Simmental • Bull

TJ GOLD 274G

HOOK'S EAGLE 6E
TJ 12C

FF MS FRONT LINE H1757

HOOK'S FRONTLINE 40F
FF MS STYLE E957

EPDs:	CE 13.8	BW -1.8	WW 73.4	YW 112.9	MCE 8.7	MM 20	MW 56.6
	CW 23.8	MARB .57	REA .66	API 154	TI 86		



FF GETCHA SUM N2078

ASA# 4568859 • BD: 2025-02-06
Adj. BW: 88 lbs. • Adj. 205: 780 lbs.

Black • Polled • 5/8 Simmental • Bull

FELT GETCHA SUM G113

W/C LOCK DOWN 206Z
FELT EMMY LOU E113

FF MS PAYDAY 815 H1178

FF PAY DAY C815
FF MS SURE BET Y978

EPDs:	CE 6.8	BW 2.2	WW 90.8	YW 139.5	MCE 4.7	MM 20.7	MW 66
	CW 41	MARB .09	REA .71	API 111	TI 79		



OPEN HEIFERS



FF MS BALD EAGLE N115

ASA# 4568893 • BD: 2025-04-10
Adj. BW: 70 lbs. • Adj. 205: 506 lbs.

Homo Black • Hetero Polled • Purebred • Cow

TSN BALD EAGLE K011

HOOK'S EAGLE 6E
TSN MISS JUDGE H414

FF MS FRONTLINE J1015

HOOK'S FRONTLINE 40F
FF MS PAYOFF X075

CE	BW	WW	YW	MCE	MM	MW
13.3	-1	82.5	125.6	7.3	27.3	68.5
CW	MARB	REA	API	TI		
34.4	.32	.66	158	90		



N187



FF MS ENHANCE 2019 N186

ASA# 4568931 • BD: 2025-03-25
Adj. BW: 75 lbs. • Adj. 205: 565 lbs.

Homo Black • Polled • 3/4 Simmental • Cow

FF ENHANCE K2019

SYDGEN ENHANCE
FF MS FRONT LINE H1619

FF MS FRONTLINE J1986

HOOK'S FRONTLINE 40F
FF MS COWBOY CUT G1586

CE	BW	WW	YW	MCE	MM	MW
13.1	-1	61.9	111	8.7	25.9	57.5
CW	MARB	REA	API	TI		
32.1	.60	.58	153	81		



FF MS FLT FRONTLINE N187

ASA# 4568915 • BD: 2025-04-07
Adj. BW: 74 lbs. • Adj. 205: 667 lbs.

Homo Black • Homo Polled • 5/8 Simmental • Cow

FELT FRONTLINE 168L

FF FRONTLINE J1556
FF TEAR DROP H1686

FF MS COWBOY J1687

TTG COWBOY CUT B750
FF MS TOUR OF DUTY D776

CE	BW	WW	YW	MCE	MM	MW
11.3	0.5	77.3	120.9	6.4	26.1	64.8
CW	MARB	REA	API	TI		
40.9	.28	.77	132	79		



FF MS BALD EAGLE N189

ASA# 4568896 • BD: 2025-03-31
Adj. BW: 78 lbs. • Adj. 205: 669 lbs.

Homo Black • Polled • 3/4 Simmental • Cow

TSN BALD EAGLE K011

HOOK'S EAGLE 6E
TSN MISS JUDGE H414

FF MS CB 1316 J1301

FF COWBOY CUT E1316
FF MS FINAL CHOICE A1001

CE	BW	WW	YW	MCE	MM	MW
12.6	-0.1	90.3	135.4	7.4	24.5	69.6
CW	MARB	REA	API	TI		
37.8	.34	.66	142	88		



N189



FF MS COWBOY CUT N205

ASA# 4568959 • BD: 2025-02-08
Adj. BW: 82 lbs. • Adj. 205: lbs.

Black • Polled • 3/4 Simmental • Cow

CCR COWBOY CUT 5048Z

TRIPLE C SINGLETARY S3H
CCR MS 4045 TIME 7322T

FF MS PRECY K1805

FELT PERSEVERANCE 302F
FOREO

CE	BW	WW	YW	MCE	MM	MW
7.8	2.1	81.8	120.9	6.1	21.3	62.1
CW	MARB	REA	API	TI		
31.3	.24	.72	115	78		



N205

OPEN HEIFERS



FF MS GENESIS N218

ASA# 4568967 • BD: 2025-03-15
Adj. BW: 74 lbs. • Adj. 205: 642 lbs.

Homo Black • Homo Polled • 5/8 Simmental • Cow

FELT EXECUTIVE ORDER 981K

W/C EXECUTIVE ORDER 8543B
RUBYS RHYTHM Z231

FF MS ENHANCE K2018

SYDGEN ENHANCE
FF MS CB AX H158

EPDs:	CE	BW	WW	YW	MCE	MM	MW
	15.3	-1.9	63.5	111	8.6	27.4	60
	CW	MARB	REA	API	TI		
	36.7	.20	.64	132	73		



CALVING PASTURE SPRING OF 25



FF MS COWBOY 1641 N236

ASA# 4568963 • BD: 2025-05-30
Adj. BW: 72 lbs. • Adj. 205: 801 lbs.

Homo Black • Polled • 5/8 Simmental • Cow

FF COWBOY H1641

TTG COWBOY CUT B750
FF MS STYLE D842

FF MS PRIME RIB K1936

TJ PRIME RIB 644H
FF MS THE ROCK G1616

EPDs:	CE	BW	WW	YW	MCE	MM	MW
	14.5	-1.8	69.5	107.9	7.2	30.5	65.2
	CW	MARB	REA	API	TI		
	31.7	.35	.64	140	79		



N236



FF MS FLT FRONTLINE N278

ASA# 4568957 • BD: 2025-04-05
Adj. BW: 76 lbs. • Adj. 205: 549 lbs.

Homo Black • Homo Polled • 3/4 Simmental • Cow

FELT FRONTLINE 168L

FF FRONTLINE J1556
FF TEAR DROP H1686

FF MS STEP 918 K1778

FF STEP UP D918
FF MS COWBOY CUT E1078

EPDs:	CE	BW	WW	YW	MCE	MM	MW
	12.3	-0.3	70.3	111.3	7.2	21.9	57
	CW	MARB	REA	API	TI		
	32.3	.25	.75	131	75		



FF MS GREAT WESTERN 1933 N361

ASA# 4568978 • BD: 2025-03-21
Adj. BW: 73 lbs. • Adj. 205: 536 lbs.

Black • Polled • 5/8 Simmental • Cow

FF GREAT WESTERN K1933

EGL GREAT WESTERN 87G
FF MS ABSOLUTE G1714

FF MS PAY DIRT 1985 L1461

FF PAY DIRT J1985
FF MS DURAMAX B1261

EPDs:	CE	BW	WW	YW	MCE	MM	MW
	15.8	-2.7	61.5	92.3	9.8	23.7	54.4
	CW	MARB	REA	API	TI		
	25.9	.44	.48	147	77		



FF MS HUSKERLAND N1251

ASA# 4569022 • BD: 2025-03-24
Adj. BW: 75 lbs. • Adj. 205: 470 lbs.

Black • Polled • 5/8 Simmental • Cow

DTR HUSKERLAND 370L

TJ BLACKSHIRT 840J
DTR MS S. IMAGE 135F

FF MS COMBINATION Z401

GLS COMBINATION R2
FF MS NEW DESIGN P410

EPDs:	CE	BW	WW	YW	MCE	MM	MW
	9.6	0.7	69.6	106.5	6.7	29.1	63.7
	CW	MARB	REA	API	TI		
	36.4	.39	.69	126	76		

Like us on Facebook

or



check out our new website:

ForsterFarms.com

OPEN HEIFERS



FF MS FLT EXECUTIVE N1645

ASA# 4568747 • BD: 2025-03-25
Adj. BW: 71 lbs. • Adj. 205: 619 lbs.

Homo Black • Polled • 3/4 Simmental • Cow

W/C EXECUTIVE ORDER 8543B
RUBYS RHYTHM Z231

HOOVER DAM
FF MS HOOVER DAM D1445
FF MS EVEREADY B944

EPDs:	CE 14.6	BW -1.6	WW 62.1	YW 102.7	MCE 8.6	MM 22.5	MW 53.6
	CW 33.9	MARB .04	REA .77	API 122	TI 67		



FF MS COWBOY 1316 N1677

ASA# 4568743 • BD: 2025-05-04
Adj. BW: 69 lbs. • Adj. 205: 570 lbs.

Homo Black • Polled • 3/4 Simmental • Cow

CCR COWBOY CUT 5048Z
FF MS RIGHT ANSWER A1116

CCR COWBOY CUT 5048Z
FF MS ROOKIE Y777

EPDs:	CE 13.3	BW -0.1	WW 70.2	YW 103.9	MCE 8.4	MM 31.9	MW 66.8
	CW 21.8	MARB .36	REA .50	API 136	TI 78		



FF MS NIGHT RIDE 918 N1724

ASA# 4568764 • BD: 2025-05-01
Adj. BW: 69 lbs. • Adj. 205: 555 lbs.

Black • Polled • 1/2 Simmental • Cow

J BAR J NIGHTRIDE 225Z
FF NIGHT RIDE K918
FF MS TOTAL W158

HOOVER DAM
FF MS HOOVER DAM E1122
FF MS ROOKIE Y922

EPDs:	CE 14.3	BW -2.3	WW 55.9	YW 93	MCE 7.9	MM 23.1	MW 51.3
	CW 32.2	MARB .52	REA .49	API 144	TI 75		



FF MS PAYDAY 1012 N1814

ASA# 4568811 • BD: 2025-03-22
Adj. BW: 71 lbs. • Adj. 205: 484 lbs.

Homo Black • Polled • 1/2 Simmental • Cow

FF PAY DAY C815
FF MR PD 815 F1012
FF MS TOTAL X074

W/C UNITED 956Y
FF MS UNITED F1614
FF MS GRADUATE D1414

EPDs:	CE 16.5	BW -2.4	WW 55.8	YW 87.6	MCE 9.6	MM 26.5	MW 54.3
	CW 26.9	MARB .19	REA .49	API 134	TI 67		



FF MS ENHANCE 2019 N1932

ASA# 4568842 • BD: 2025-04-06
Adj. BW: 59 lbs. • Adj. 205: 534 lbs.

Homo Black • Polled • 1/2 Simmental • Cow

SYDGEN ENHANCE
FF ENHANCE K2019
FF MS FRONT LINE H1619

CCR ABILENE 6018C
FF MS ABILENE G1722
FF MS PAYOFF E922

EPDs:	CE 17.5	BW -2.7	WW 57.6	YW 104.6	MCE 10.3	MM 22.9	MW 52.4
	CW 32.7	MARB .68	REA .40	API 156	TI 82		



FF MS GRATITUDE N1954

ASA# 4568826 • BD: 2025-04-12
Adj. BW: 67 lbs. • Adj. 205: 709 lbs.

Red • Polled • 3/4 Simmental • Cow

WS ALL ABOARD B80
HOOK`S GRATITUDE 71G
HOOK`S CINNAMON 44C

WS PRIME BEEF Z8
FF MS PRIME BEEF G1354
FF MS SAM A954

EPDs:	CE 14.6	BW -2.2	WW 70.4	YW 96.5	MCE 8	MM 26	MW 61.1
	CW 13.2	MARB .31	REA .69	API 129	TI 79		

BRED HEIFERS



FF MS ENHANCE 2019 M126

ASA# 4449841 • BD: 2024-03-10
Adj. BW: 72 lbs. • Adj. 205: 564 lbs.

Homo Black Polled 5/8 Simmental Cow

FF ENHANCE K2019

SYDGEN ENHANCE

FF MS FRONT LINE H1619

FF MS BEACON J1916

HOOK'S BEACON 56B

FF MS JIFF G1015

EPDs:	CE	BW	WW	YW	MCE	MM	MW
	14.2	-2	62.9	113.2	8.7	29.2	62

	CW	MARB	REA	API	TI
	41.1	.65	.71	157	84

Bred to DTR RIGHT HAND MAN 460M. Due 04/10/2026.



FF MS GUARDIAN M149

ASA# 4449843 • BD: 2024-02-07
Adj. BW: 73 lbs. • Adj. 205: 454 lbs.

Homo Black Polled 3/4 Simmental Cow

CLRS GUARDIAN 317G

HOOK'S BEACON 56B

CLRS ALWAYS XCELLENT

FF MS BEACON J1949

HOOK'S BEACON 56B

FF MS CB UP G1539

EPDs:	CE	BW	WW	YW	MCE	MM	MW
	11.2	-1.2	81.4	127.4	5.9	17.8	58.4

	CW	MARB	REA	API	TI
	37.2	.55	.87	155	89

Bred to CONNEALY VALIDATION. Due 02/28/2026.



FF MS PAY DIRT 1985 M180

ASA# 4449811 • BD: 2024-04-19
Adj. BW: 72 lbs. • Adj. 205: 514 lbs.

Black Polled 1/2 Simmental Cow

FF PAY DIRT J1985

CCR PAY DIRT 2340C

FF MS GOT GAME G885

FF MS FRANCHISE J1380

TJ FRANCHISE 451D

FF MS BRILLIANCE A1180

EPDs:	CE	BW	WW	YW	MCE	MM	MW
	14.9	-1	67.8	107	8	25.3	59.4

	CW	MARB	REA	API	TI
	31.9	.49	.39	140	80

Bred to DTR RIGHT HAND MAN 460M. Due 04/05/2026.



FF MS CADILLAC M210

ASA# 4449860 • BD: 2024-02-26
Adj. BW: 72 lbs. • Adj. 205: 620 lbs.

Red Homo Polled 3/8 Simmental Cow

LEACHMAN CADILLAC L025A

HOOKS TRINITY 9T

REMPE STABILIZER YD032

FF MS FUSION K1510

ANDRAS FUSION R236

FF MS PRIME BEEF C1110

EPDs:	CE	BW	WW	YW	MCE	MM	MW
	12.3	-1.5	69.5	104.5	7.4	28	62.6

	CW	MARB	REA	API	TI
	19.6	.28	.44	136	74

Bred to CDI PERCEPTION 254E. Due 03/09/2026.



FF MS GOLD M216

ASA# 4449861 • BD: 2024-02-18
Adj. BW: 74 lbs. • Adj. 205: 641 lbs.

Homo Black Homo Polled 3/4 Simmental Cow

TJ GOLD 274G

HOOK'S EAGLE 6E

TJ 12C

FF MS ENHANCE K1516

SYDGEN ENHANCE

FF MS TURN POINT C816

EPDs:	CE	BW	WW	YW	MCE	MM	MW
	13.9	-2	80.4	132.7	8.7	23.4	64.2

	CW	MARB	REA	API	TI
	39.6	.58	.76	158	92

Bred to DTR RIGHT HAND MAN 460M. Due 04/01/2026.



FF MS NATIONAL M217

ASA# 4449851 • BD: 2024-02-22
Adj. BW: 70 lbs. • Adj. 205: 526 lbs.

Black Homo Polled 1/8 Simmental Cow

CONNEALY NATIONAL 390C

DEER VALLEY PATRIOT 3222

ELLZA OF CONANGA 390C

FF MS CB CHOICE K1117

TJ COWBOY'S CHOICE 420B

FF MS PAYOFF Y167

EPDs:	CE	BW	WW	YW	MCE	MM	MW
	19.9	-2.6	72.2	117.1	9.1	29.2	65.3

	CW	MARB	REA	API	TI
	46.3	.45	.58	152	82

Bred to DTR RIGHT HAND MAN 460M. Due 04/01/2026.



FF MS ENHANCE M219

ASA# 4449862 • BD: 2024-03-03
Adj. BW: 73 lbs. • Adj. 205: 744 lbs.

Homo Black Polled 1/4 Simmental Cow

SYDGEN ENHANCE

SYDGEN EXCEED 3223

SYDGEN RITA 2618

FF MS COWBOY 1316 K1519

FF COWBOY CUT E1316

FF MS HOOVER C819

EPDs:	CE	BW	WW	YW	MCE	MM	MW
	13.2	-1	82.1	145.2	8	33.6	76.5

	CW	MARB	REA	API	TI
	48.3	.74	.52	158	94

Bred to DTR RIGHT HAND MAN 460M. Due 03/20/2026.



M230

ASA# Commercial

Cow

Sire: TJ GOLD 274G

Bred to DTR RIGHT HAND MAN 460M. Due 05/15/2026.

BRED HEIFERS



FF MS BALD EAGLE M243

ASA# 4449856 • BD: 2024-02-14
Adj. BW: 63 lbs. • Adj. 205: 514 lbs.

Black Homo Polled Purebred Cow

TSN BALD EAGLE K011

HOOK'S EAGLE 6E

TSN MISS JUDGE H414

FF MS BIG TIMBER K1443

KOCH BIG TIMBER 685D

FF MS BEEF B843

EPDs:	CE	BW	WW	YW	MCE	MM	MW
	16.6	-2.9	78.5	121.1	9.1	21.5	60.7

CW	MARB	REA	API	TI
32	.21	.68	153	87

Bred to DTR RIGHT HAND MAN 460M. Due 04/20/2026.



FF MS ARROWHEAD M245

ASA# 4449866 • BD: 2024-02-12
Adj. BW: 81 lbs. • Adj. 205: 587 lbs.

Homo Black Homo Polled 5/8 Simmental Cow

TJ ARROWHEAD 263G

K C F BENNETT HOMESTEAD

TJ 22X

FF MS PERSEVERANCE K1645

FELT PERSEVERANCE 302F

FF MS HOOVER DAM D1445

EPDs:	CE	BW	WW	YW	MCE	MM	MW
	10.8	-1.1	75.2	119.6	5.8	27.2	64.8

CW	MARB	REA	API	TI
34.4	.25	.74	130	79

Bred to DTR RIGHT HAND MAN 460M. Due 03/20/2026.



FF MS GREAT WESTERN 1933 M249

ASA# 4449901 • BD: 2024-04-17
Adj. BW: 73 lbs. • Adj. 205: 664 lbs.

Homo Black Polled 5/8 Simmental Cow

FF GREAT WESTERN K1933

EGL GREAT WESTERN 87G

FF MS ABSOLUTE G1714

FF MS AX COWBOY K1745

APEX COWBOY CUT SW172B

FF MS BEEF E744

EPDs:	CE	BW	WW	YW	MCE	MM	MW
	14.8	-2.5	64.2	99.6	8.7	28.1	60.2

CW	MARB	REA	API	TI
31	.52	.55	150	80

Bred to DTR RIGHT HAND MAN 460M. Due 03/25/2026.



FF MS DYNAMIC M256

ASA# 4449858 • BD: 2024-02-24
Adj. BW: 88 lbs. • Adj. 205: lbs.

Black Hetero Polled 1/8 Simmental Cow

B A R DYNAMIC

DEER VALLEY GROWTH FUND

B A R BLACKCAP 7235-B0048

FF MS ENHANCE K1456

SYDGEN ENHANCE

FF MS IMPRESSIVE B756

EPDs:	CE	BW	WW	YW	MCE	MM	MW
	12.2	-0.6	94.9	162.5	8.7	24.4	72.6

CW	MARB	REA	API	TI
52.1	.81	.35	162	102

Bred to DTR RIGHT HAND MAN 460M. Due 03/20/2026.



FF MS CADILLAC M265

ASA# 4449889 • BD: 2024-02-17
Adj. BW: 54 lbs. • Adj. 205: lbs.

Red Polled 3/8 Simmental Cow

LEACHMAN CADILLAC L025A

HOOKS TRINITY 9T

REMPE STABILIZER YD032

FF MS REDEPTION K2065A

BROWN JYJ REDEMPTION Y1334

FF BULLET PROOF H1354

EPDs:	CE	BW	WW	YW	MCE	MM	MW
	17.3	-4.1	71	113.6	8.3	27.5	62.9

CW	MARB	REA	API	TI
38.2	.25	.52	145	78

Bred to DTR RIGHT HAND MAN 460M. Due 03/25/2026.



FF MS HONOR M271

ASA# 4449890 • BD: 2024-03-12
Adj. BW: 69 lbs. • Adj. 205: 560 lbs.

Homo Black Homo Polled Purebred Cow

KBHR HONOR H060

HOOK'S BEACON 56B

WS MISS SUGAR C4

FF MS HOPE K2071

W/C NIGHT WATCH 84E

LIN BELLEHEIR

EPDs:	CE	BW	WW	YW	MCE	MM	MW
	13.4	-1.3	82.2	121.6	8	21.9	63

CW	MARB	REA	API	TI
36.5	.37	.90	152	91

Bred to DTR RIGHT HAND MAN 460M. Due 05/15/2026.



FF MS PLUS ONE M287

ASA# 4449892 • BD: 2024-02-18
Adj. BW: 97 lbs. • Adj. 205: 655 lbs.

Homo Black Polled 3/8 Simmental Cow

E&B PLUS ONE

CONNELLY CONFIDENCE PLUS

E&B LADY 1023 PRECISION 936

FF MS BIG TIMBER K2077

KOCH BIG TIMBER 685D

FF MS NIGHTRIDE H1877

EPDs:	CE	BW	WW	YW	MCE	MM	MW
	9.8	0.3	80.6	132.9	3.4	23.6	64.3

CW	MARB	REA	API	TI
44.5	.63	.71	136	87

Bred to KBHR BOLD RULER H152. Due 02/25/2026.



FF MS EMMETT M1242

ASA# 4449899 • BD: 2024-02-20
Adj. BW: 79 lbs. • Adj. 205: 562 lbs.

Black Polled 5/8 Simmental Cow

FELT EMMETT 831J

SCHOOLEY EMMETT C543

FELT STAR GAZING 911D

FF MS BEEF Z941

TRIPLE C BEEF MAKER

FF MS TOTAL W281

EPDs:	CE	BW	WW	YW	MCE	MM	MW
	9.3	1.6	83	135.1	5.4	23.6	65.4

CW	MARB	REA	API	TI
48.3	.35	.69	124	82

Bred to DTR RIGHT HAND MAN 460M. Due 03/25/2026.

BRED HEIFERS



FF MS STEP UP 918 M1443

ASA# 4449629 • BD: 2024-04-10
Adj. BW: 69 lbs. • Adj. 205: 851 lbs.
Black Polled 3/4 Simmental Cow

FF STEP UP D918

FF MS BEEF B843

EPDs:	CE	BW	WW	YW	MCE	MM	MW
	13.4	0.3	75.6	124.8	8	22.6	60.3
	CW	MARB	REA	API	TI		
	50.3	.11	1.07	128	75		

Bred to DTR RIGHT HAND MAN 460M. Due 04/20/2026.

FELT PURPLE STEPS UP
FF MS TOTAL W158
TRIPLE C BEEF MAKER
FF MS FUSION U283



FF MS BALD EAGLE M1451

ASA# 4449611 • BD: 2024-04-07
Adj. BW: 67 lbs. • Adj. 205: 708 lbs.

Homo Black Polled 3/4 Simmental Cow

TSN BALD EAGLE K011

VOLK COW 211B

EPDs:	CE	BW	WW	YW	MCE	MM	MW
	15.2	-1.2	92.2	139.4	8.2	25.5	71.5
	CW	MARB	REA	API	TI		
	43.5	.27	.90	134	90		

Bred to DTR RIGHT HAND MAN 460M. Due 03/20/2026.

HOOK'S EAGLE 6E
TSN MISS JUDGE H414
MR NLC UPGRADE U8676
2026



FF MS GOLD M1456

ASA# 4449627 • BD: 2024-02-05
Adj. BW: 77 lbs. • Adj. 205: 586 lbs.
Black Polled 3/4 Simmental Cow

TJ GOLD 274G

FF MS IMPRESSIVE B756

EPDs:	CE	BW	WW	YW	MCE	MM	MW
	13	-1.9	69.7	106	7.7	15.4	50.1
	CW	MARB	REA	API	TI		
	17.8	.36	.52	141	78		

Bred to DTR RIGHT HAND MAN 460M. Due 04/01/2026.

HOOK'S EAGLE 6E
TJ 12C
ASR IMPRESSIVE Y162
FF MS FIG THIS T356



FF MS GETCHA SOME M1480

ASA# 4449628 • BD: 2024-02-29
Adj. BW: 79 lbs. • Adj. 205: 703 lbs.

Homo Black Polled 5/8 Simmental Cow

FELT GETCHA SUM G113

FF MS PAY DAY B780

EPDs:	CE	BW	WW	YW	MCE	MM	MW
	5.9	2.7	92.2	139.5	3.8	24	70
	CW	MARB	REA	API	TI		
	38.7	.05	.64	107	78		

Bred to DTR RIGHT HAND MAN 460M. Due 04/10/2026.

W/C LOCK DOWN 206Z
FELT EMMY LOU E113
FF PAY DAY Y110
FF MS FIGURE THIS T500

DVAuction
Broadcasting Real-Time Auctions

Can't make the sale?
Let DVAuction bring the sale to you!
Busy during the sale?
Let DVAuction represent your bid!

Visit www.DVAuction.com
and Register Today

For General Questions
Please Contact Our Office:
(402) 316-5460 or
support@dvauction.com



FF MS REDEMPTION M1666

ASA# 4449652 • BD: 2024-02-04
Adj. BW: 79 lbs. • Adj. 205: 635 lbs.

Red Polled 1/4 Simmental Cow

BROWN JYJ REDEMPTION Y1334

FF MS IMPRESSIVE D1060

EPDs:	CE	BW	WW	YW	MCE	MM	MW
	12.5	-2.3	68.4	109.6	4.4	23.1	57.2
	CW	MARB	REA	API	TI		
	24.8	.26	.34	126	74		

Bred to BB PROPULSION 9096. Due 02/20/2026.

BECKTON NEBULA P P707
JYJ MSJOLENE W16
ASR IMPRESSIVE Y162
FF MS TRADER X764



FF MS EXECUTIVE M1688

ASA# 4449666 • BD: 2024-03-08
Adj. BW: 69 lbs. • Adj. 205: 478 lbs.

Homo Black Homo Polled 3/4 Simmental Cow

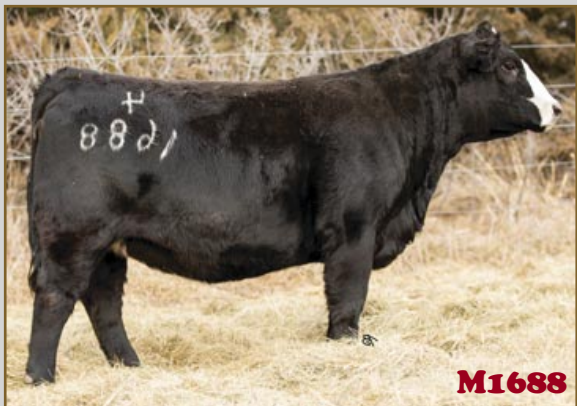
FELT EXECUTIVE ORDER 981K

FF MS GRADUATE ET D540

EPDs:	CE	BW	WW	YW	MCE	MM	MW
	15.7	-2.2	56.4	95.1	8.7	20.8	48.9
	CW	MARB	REA	API	TI		
	29.3	-.09	.78	116	61		

Bred to DTR RIGHT HAND MAN 460M. Due 04/20/2026.

W/C EXECUTIVE ORDER 8543B
RUBY'S RHYTHM Z231
S D S GRADUATE 006X
FF MS FREEDOM SM/AN R621



M1688

BRED HEIFERS



FF MS COWBOY 1641 M1742

ASA# 4449700 • BD: 2024-04-03
Adj. BW: 69 lbs. • Adj. 205: 633 lbs.

Homo Black Polled 1/2 Simmental Cow

FF COWBOY H1641

TTG COWBOY CUT B750

FF MS STYLE D842

TTG DURAMAX E750

AA RIGHT DESIGN211 OF717-704

TTG DURAMAX DATELINE A750

CE	BW	WW	YW	MCE	MM	MW
17.3	-1.8	61.6	99.2	9.5	26.7	56.8

CW	MARB	REA	API	TI
34.7	.29	.50	137	73

Bred to DTR RIGHT HAND MAN 460M. Due 03/25/2026.



FF MS PAYDAY 1012 M1751

ASA# 4449680 • BD: 2024-04-22
Adj. BW: 67 lbs. • Adj. 205: 636 lbs.

Homo Black Polled 5/8 Simmental Cow

FF MR PD 815 F1012

FF PAY DAY C815

FF MS TOTAL X074

FF MS COWBOY CUT E1251

CCR COWBOY CUT 5048Z

FF MS COMBINATION Z401

CE	BW	WW	YW	MCE	MM	MW
15.8	-1	64.2	91.5	9.9	31.3	63.4

CW	MARB	REA	API	TI
22.1	.25	.60	139	72

Bred to CONNEALY VALIDATION. Due 02/25/2026.



FF MS ENERGIZE M1782

ASA# 4449704 • BD: 2024-02-05
Adj. BW: 73 lbs. • Adj. 205: 629 lbs.

Red Polled 3/8 Simmental Cow

BIEBER CL ENERGIZE F121

BIEBER CL ATOMIC C218

BIEBER CL ADELLE 575D

FF PRIME BEEF E882

WS PRIME BEEF Z8

FF CHEYENNE U606

CE	BW	WW	YW	MCE	MM	MW
13.9	-2.2	73.8	117.6	7.6	23.4	60.1

CW	MARB	REA	API	TI
28.2	.42	.51	137	81

Bred to DTR RIGHT HAND MAN 460M. Due 03/25/2026.



M1782



FF MS PAYDAY 1012 M1820

ASA# 4449721 • BD: 2024-04-28
Adj. BW: 67 lbs. • Adj. 205: 637 lbs.

Homo Black Polled 5/8 Simmental Cow

FF MR PD 815 F1012

FF PAY DAY C815

FF MS TOTAL X074

FF MS COWBOY 1210 F1429

FF COWBOY CUT D1210

FF MS UPSHOT B095

CE	BW	WW	YW	MCE	MM	MW
17.2	-1.9	61.1	91.6	10.4	34.1	64.7

CW	MARB	REA	API	TI
22	.32	.61	148	74

Bred to DTR RIGHT HAND MAN 460M. Due 03/15/2026.



DTR RIGHT HAND MAN



FF MS COWBOY 1641 M1822

ASA# 4449720 • BD: 2024-02-29
Adj. BW: 71 lbs. • Adj. 205: 629 lbs.

Homo Black Polled 5/8 Simmental Cow

FF COWBOY H1641

TTG COWBOY CUT B750

FF MS STYLE D842

FF MS PAY DAY 815 F1422

FF PAY DAY C815

FF MS PARAMOUNT B1222

CE	BW	WW	YW	MCE	MM	MW
15	-1.2	63.2	96.2	7.9	25.7	57.2

CW	MARB	REA	API	TI
29.2	.20	.57	131	70

Bred to DTR RIGHT HAND MAN 460M. Due 04/01/2026.



M1930

BRED HEIFERS



M1871

Cow

Bred to DTR RIGHT HAND MAN 460M. Due 04/05/2026.



FF MS EMMETT M1884

ASA# 4449722 • BD: 2024-02-12
Adj. BW: 75 lbs. • Adj. 205: 689 lbs.

Black Polled 5/8 Simmental Cow

SCHOOLEY EMMETT C543

FELT STAR GAZING 911D

FF COWBOY CUT D1210

FF MS EVEREADY B784

EPDs:	CE 12.3	BW 0.5	WW 86	YW 121	MCE 6.6	MM 24.2	MW 67.2
	CW 33.8	MARB .40	REA .70	API 132	TI 86		

Bred to DTR RIGHT HAND MAN 460M. Due 03/10/2026.



FF STEP UP 918 M1912

ASA# 4449762 • BD: 2024-02-27
Adj. BW: 85 lbs. • Adj. 205: 781 lbs.

Black Polled 5/8 Simmental Bull

FELT PURPLE STEPS UP

FF MS TOTAL W158

FF BEEF Z782

FF MS LUCKY MAN U506

FF STEP UP D918

FF BEEF G876

EPDs:	CE 10.4	BW 1	WW 66.8	YW 109.3	MCE 6.2	MM 23.6	MW 56.9
	CW 34.9	MARB .30	REA .72	API 126	TI 72		

Bred to DTR RIGHT HAND MAN 460M. Due 03/25/2026.



FF MS GRATITUDE M1954

ASA# 4449744 • BD: 2024-02-28
Adj. BW: 80 lbs. • Adj. 205: 680 lbs.

Red Polled 3/4 Simmental Cow

WS ALL ABOARD B80

HOOK'S CINNAMON 44C

WS PRIME BEEF Z8

FF MS SAM A954

HOOK'S GRATITUDE 71G

FF MS PRIME BEEF G1354

EPDs:	CE 11.2	BW -0.8	WW 75.4	YW 106.7	MCE 6.4	MM 26	MW 63.6
	CW 21.8	MARB .31	REA .79	API 125	TI 80		

Bred to BB PROPULSION 9096. Due 02/28/2026.



M2010



FF MS EAGLE M2010

ASA# 4449790 • BD: 2024-02-01
Adj. BW: 77 lbs. • Adj. 205: 650 lbs.

Homo Black Polled 5/8 Simmental Cow

HOOK'S BLACK HAWK 50B

HOOK'S CRYSTAL 1C

W/C UNITED 956Y

FF MS STEP UP E052

HOOK'S EAGLE 6E

FF UNITED H1720

EPDs:	CE 10.7	BW -0.7	WW 85.8	YW 128	MCE 5.8	MM 21.8	MW 64.6
	CW 29.4	MARB .37	REA .94	API 135	TI 87		

Bred to DTR RIGHT HAND MAN 460M. Due 04/20/2026.



M2067



FF MS ARROWHEAD M2067

ASA# 4449793 • BD: 2024-02-06
Adj. BW: 70 lbs. • Adj. 205: 535 lbs.

Black Polled 5/8 Simmental Cow

K C F BENNETT HOMESTEAD

TJ 22X

HOOK'S FRONTLINE 40F

FF MS STYLE E957

TJ ARROWHEAD 263G

FF MS FRONT LINE H1757

EPDs:	CE 14.4	BW -2.6	WW 66.5	YW 106.2	MCE 7.8	MM 29.1	MW 62.2
	CW 25.4	MARB .53	REA .54	API 150	TI 83		

Bred to DTR RIGHT HAND MAN 460M. Due 03/25/2026.

BRED HEIFERS



FF MS BALD EAGLE M2043

ASA# 4449796 • BD: 2024-02-01
Adj. BW: 64 lbs. • Adj. 205: 605 lbs.

Homo Black Polled Purebred Cow

TSN BALD EAGLE K011

HOOK'S EAGLE 6E
TSN MISS JUDGE H414

FF MS COWBOY CUT H1843

CCR COWBOY CUT 5048Z
FF MS UNITED F1243

CE	BW	WW	YW	MCE	MM	MW
EPDs: 13.3	-0.2	103.2	156.4	8.2	26.5	78
CW	MARB	REA	API	TI		
47.9	.26	.86	156	100		

Bred to DTR RIGHT HAND MAN 460M. Due 04/10/2026.



FF MS GUARDIAN M2046

ASA# 4449779 • BD: 2024-02-15
Adj. BW: 73 lbs. • Adj. 205: 661 lbs.

Black Polled Purebred Cow

CLRS GUARDIAN 317G

HOOK'S BEACON 56B
CLRS ALWAYS XCELLENT

FF MS ABILENE H1445

CCR ABILENE 6018C
FF MS EVEREADY B944

CE	BW	WW	YW	MCE	MM	MW
EPDs: 11.2	-0.2	91.4	138.5	6.4	17.6	63.2
CW	MARB	REA	API	TI		
44.1	.48	1.06	161	98		

Bred to DTR RIGHT HAND MAN 460M. Due 04/01/2026.



FF MS GRATITUDE M2060

ASA# 4449799 • BD: 2024-03-28
Adj. BW: 68 lbs. • Adj. 205: 755 lbs.

Red Polled 3/4 Simmental Cow

HOOK'S GRATITUDE 71G

WS ALL ABOARD B80
HOOK'S CINNAMON 44C

FF MS BULLET PROOF H1860

RFS BULLETPROOF B42
FF MS PREMIER F1360

CE	BW	WW	YW	MCE	MM	MW
EPDs: 13.2	-1.7	79.3	111.7	6.8	28.6	68.1
CW	MARB	REA	API	TI		
23.5	.37	.78	134	85		

Bred to ANDRAS FUSION R236. Due 02/23/2026.

THANK YOU
FOR ATTENDING THE 47TH
FORSTER FARMS
SIMMENTAL PRODUCTION SALE



FF MS GOLD M2071

ASA# 4449801 • BD: 2024-02-12
Adj. BW: 84 lbs. • Adj. 205: 759 lbs.

Black Polled 3/4 Simmental Cow

TJ GOLD 274G

HOOK'S EAGLE 6E
TJ 12C

LIN BELLEHEIR

GATEWAY FOLLOW ME F163
LIN HEIRESS

CE	BW	WW	YW	MCE	MM	MW
EPDs: 8.5	1.2	87.1	124.6	5.7	20.4	63.9
CW	MARB	REA	API	TI		
30.3	.45	.71	129	86		

Bred to DTR RIGHT HAND MAN 460M. Due 05/15/2026.



FF MS GOLD M2073

ASA# 4449774 • BD: 2024-02-06
Adj. BW: 64 lbs. • Adj. 205: 636 lbs.

Black Polled 5/8 Simmental Cow

TJ GOLD 274G

HOOK'S EAGLE 6E
TJ 12C

FF MS BRILLIANCE 1310 H1286

FF BRILLIANCE C1310
FF MS FINAL PRODUCT Z978

CE	BW	WW	YW	MCE	MM	MW
EPDs: 14.4	-2.4	70.8	109.4	9.6	22.5	58
CW	MARB	REA	API	TI		
25.7	.51	.47	148	84		

Bred to KBHR REVOLUTION H071. Due 03/01/2026.



FF MS GOLD M162A

ASA# 4449821 • BD: 2024-02-02
Adj. BW: 61 lbs. • Adj. 205: 534 lbs.

Homo Black Polled 5/8 Simmental Cow

TJ GOLD 274G

HOOK'S EAGLE 6E
TJ 12C

FF MS FRANCHISE J1562

TJ FRANCHISE 451D
FF MS FIN ANSWER C411

CE	BW	WW	YW	MCE	MM	MW
EPDs: 13.6	-1.7	73	111.5	7.9	12.6	49.1
CW	MARB	REA	API	TI		
25.4	.54	.39	146	83		

Bred to DTR RIGHT HAND MAN 460M. Due 05/01/2026.

FORSTER FARMS

74096 Road 434 • Smithfield, NE 68976-1039

PRESORTED
FIRST-CLASS MAIL
U.S. POSTAGE PAID
LivestockDirect.net
PERMIT NO. 29

Forster Farms “Simmental Production Sale”

Saturday, January 24, 2026 - 1:00 p.m.
at the farm - Smithfield, Nebraska



N1860



N1978



M1688



N1760



N378



N187